

MINOVATE

15

NI

ARCHITECTURE







# (Clay, the bridge between tradition and innovation)

Architecture shapes our living environment, from cities to places where history and the future meet. A constant in this is clay, a material that has stood the test of time.

Clay is a renewable and natural material that has earned its place in construction through the centuries. From bricks and roof tiles to paving, clay is synonymous with a perfect balance between tradition and innovation.

Brick is the number one choice for adding something new to historical surroundings without disrupting the character of the past. Carefully chosen colours, shapes and textures create harmony between old and new – a subtle dialogue in which tradition and modernity reinforce each other.

Clay is more than a tribute to the past. It evolves along with social trends, architectural visions and changing regulations. Bricks rise up in high-rise buildings. With smart designs and modern techniques, brick proves that it can also enrich towers and urban skylines. The material not only offers strength but also brings warmth, character and a tangible human dimension to architecture.

Architects are increasingly choosing brick to bring warmth and tactility to their designs. Facing bricks are used to radiate robustness, to break up clean lines or to give a design a contemporary dynamic. Long, narrow bricks give compact buildings a grand sense of space and reinforce the modern character of a design.

In a world where sustainability and innovation come together, clay proves that tradition is not an obstacle, but rather an opportunity.

(New in our product line)

## Ceramic newcomers

wienerberger is refining its selection with several new products that are highly acclaimed in terms of both sustainability and aesthetics.





Continuity of the same colour hue on the roof and the façade can create a homogeneous effect and a sleek look that emphasises the shape of the building.

#### Elfino Grande plain tile: grand in architectural appearance

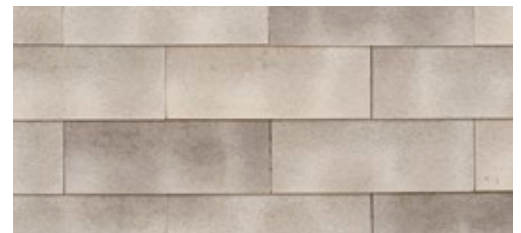
A roof and façade with grandeur demand a suitable roof tile. The Elfino Grande plain tile not only stands out due to its refined and minimalist appearance but goes one step further. With its unique nuanced finish and extra width, this architectural roof tile exudes pure grandeur. The result is a sleek and clean effect on both the roof and the façade, with a refined and versatile look. The perfect roof tile for contemporary and minimalist architecture, one that emphasises the shape and horizontality of the building.

The Elfino Grande plain tile is made of clay and has a continuous bonding rib. Thanks to its rainproof finish, no expensive substructure is required and the tile is suitable for relatively low roof pitches (25°). An additional aesthetic advantage is that the tiles can be laid both in a crosswise and in a random pattern.

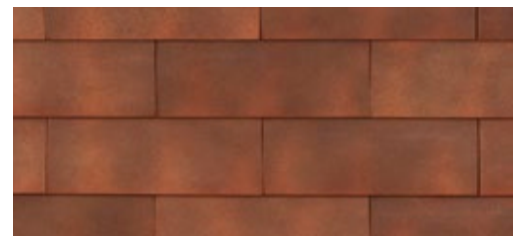
#### Two sizes

The Elfino Grande plain tile collection is available in two sizes: the 320x388 mm Elfino Grande tile was designed for roof and façade, and the 198x388 mm Elfino Grande short tile is suitable for use on façades. The short tile helps bring horizontality to the façade appearance. Both sizes have the advantage of requiring fewer tiles per square metre, ensuring high installation efficiency.

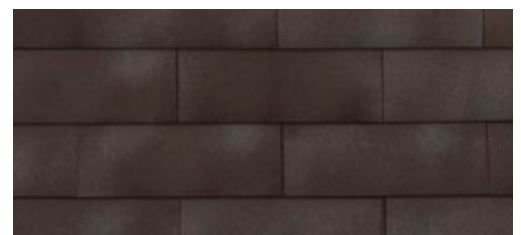
The Elfino Grande is available in 2 sizes and 3 colours.



Smokey White-Grey  
(3 shades of white-grey nuances)



Smokey Red  
(warm red, rusty nuances)



Smokey Brown-Grey  
(dark brown with light tan nuances)

### **Fjord: facing bricks with the power of nature**

The desire for warmth, textural experience and human scale cries out for authentic and expressive architecture. The answer lies in simplicity and tangibility. The Fjord collection responds to this with a facing brick that captures the raw beauty of nature. The new facing brick combines the power of ancient landscapes with modern technology.

The Fjord collection is inspired by the rugged, untouched beauty of Scandinavian fjord landscapes. The waterstruck finish creates a distinctive look that gives the bricks depth, texture and a strong connection to nature. During the production process, natural pigments are digitally applied to carefully selected clay types. This results in subtle colour variations and a vibrant, organic look reminiscent of the layering and hues of a fjord landscape. The effect is not only visually powerful but also tangible - each brick tells a story of connection with nature.

### **Five sustainable colours**

The bricks in the Fjord collection offer a wide range of colour combinations that give each building project a unique character. The range includes five colours: Fjord Ardal (brown with black nuances), Fjord Gapa (beige with brown accents), Fjord Alta (ivory-beige with green-brown shades), Fjord Nordal (beige with dark brown and grey shades) and Fjord Lustra (ivory-beige with nuances).

The facing bricks are available in the Eco-brick WF, size 215x65x50 mm, which combines a sustainable and efficient use of resources with more space in the construction project.



The Fjord collection reflects the aesthetics of fjords: shaped by the force of water and wind, these facing bricks are a tribute to nature.



### **New colours and ecological dimension for Aquata**

Aquata is the ultimate answer to the need for local infiltration solutions with high aesthetics and quality. The extruded clay pavers with spacers allow rainwater to pass through 6 mm-wide joints. The joint portion of the total paving is thus about 10% of the total surface area. This is the minimum requirement to be considered permeable paving.

Thanks to new colours and a tumbled version, the application options of the water-permeable clay pavers are expanded. The range has been enriched with an all-round, solid colour range consisting of five shades: Alba, Barago, Ruta, Selda and Vulka. This applies to both the un-tumbled and tumbled Retro versions. Together, they account for 10 new clay pavers in the selection.

### **Ecological variant**

Besides the aesthetic expansion, there is now also a smaller version of the Aquata extruder clay paver. The new colours are now available in a 6 cm-tall paver, as an alternative to the usual 8 cm in height for paving. This dematerialisation has a positive effect on the environmental impact of the clay paver. The smaller size is perfectly satisfactory for high-quality garden paving such as garden paths, terraces, and paving around the house (category IV) or for driveways and parking spaces (category III).



Ten new clay paver variants have been added to the Aquata collection.



(Moving away from sleekness)

From minimalism to human scale

There is a shift going on in architecture. Clean lines and the use of industrial materials are making way for authentic and expressive architecture. By combining simplicity with human scale and tactility, a balance is created between abstraction and sensitivity.

People increasingly long for warm, personal and sheltered spaces, for security and character in their environment. Architects are responding to this by enriching sleek designs with textured materials and inviting details. This is leading to a new architectural style: minimalist in functionality but warm and personal in appearance.

Brick is making a comeback in response to the cold aesthetics of industrial materials. With organic shapes, sculptural façades, and details like curves and indentations, brick combines authenticity and craftsmanship with timeless, striking architecture. The Jonas Building in Amsterdam, for example, combines round shapes and brick to create a sense of shelter and intimacy in an urban environment. And architect Frédéric Vander Laenen, in his design for Houtmeyers Plant Centre, opts for curves and protruding parts to create an expressive character (see photo below).





### **Brick as a mood setter**

The desire for tactile façades and a warm appearance is also reflected in interior design. Brick offers a versatile alternative for enriching spaces with texture, warmth and a timeless aesthetic. Depending on the application, it can exude a rough charm or have a refined, smooth finish. However it is used, brick forms a powerful contrast with smooth materials such as glass, concrete or plastered surfaces. The rich textural possibilities create an interplay of light and shadow that makes spaces livelier and more interesting. In this way, brick succeeds in giving interiors a contemporary atmosphere that is homey at the same time.

### **Authenticity in a green future**

The renewed popularity of brick is also the result of an increasing focus on sustainable materials. Brick has a long lifespan, requires little maintenance and contributes to better thermal comfort. Architects and clients are increasingly opting for materials that are not only visually appealing but also contribute to sustainable building practices. Brick is easy to recycle and reuse, which means it contributes to circular building initiatives.





### Bridge between past and future

Brick evokes nostalgia and forms a tangible link with the history of architecture. By applying the material in a contemporary way in round and organic shapes, a bridge is created between tradition and innovation. This approach offers a sense of authenticity and continuity in both historic city centres and new neighbourhoods. At the same time, brick gives buildings a unique identity.

The use of brick is a reminder of old crafts, but places them in a modern context that remains relevant to contemporary architecture. This reflects a search for a balance between tradition and modernity. Where minimalism and industrial materials dominated for years, a type of architecture is now emerging that offers space for variation, character and emotional depth. Brick, as a versatile and sustainable material, plays a key role in this. It bridges the gap between classic and contemporary and enables architects to create designs that connect with their environment both visually and emotionally.

### Balance between tradition and innovation

Several leading architects have already experimented with these organic forms and the reintegration of brick into the interior. Their motivation is often a quest for balance between tradition and innovation. While modern construction techniques make it possible to use brick in new and unusual ways, the link with historical craftsmanship ensures that the buildings radiate a sense of timelessness and continuity.

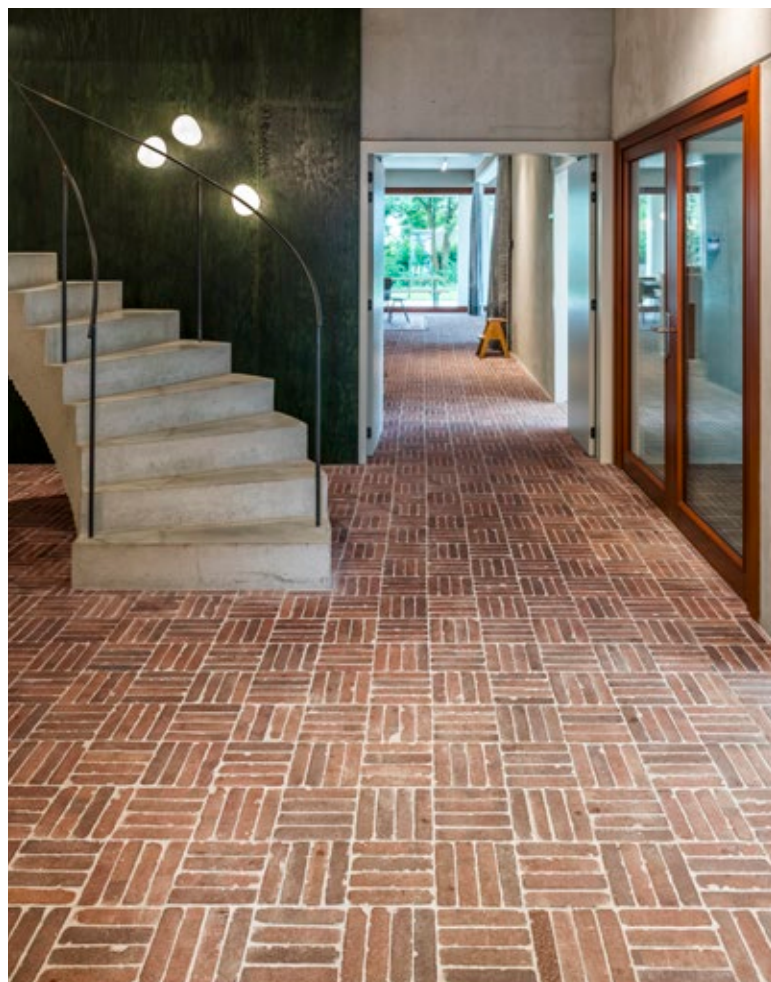
Vincent Van Duysen, for example, integrated brick into the façade and interior of his house to create a rustic yet refined atmosphere. Using local materials and construction techniques, he creates a sense of authenticity and connection with the landscape.

Photo left:

Restaurant M Bistro in Nieuwpoort is a nice illustration in the commercial sector, with brick combining the play of light and shadow with security. Design: Studio Bjorn Verlinde, Kortrijk & COMPAGNIE COSTUME\_tailored architecture, Bruges. Coordination: B&V Project, Poperinge

Photo right:

With the renewed popularity of authentic, natural materials, terracotta floors are also making a comeback. Clay pavers fit into this picture perfectly. By using the same clay pavers both indoors and outdoors, an interesting visual relationship can be created between the spaces, which contributes to the overall aesthetic. Design: Sophie Van Noten Architect, Antwerp



(A nod to historical heritage)

A timeless connection

Redevelopment projects, the energetic renovation challenge and renovation wishes in historic city and village centres require a balance with the existing architecture. Brick has the unique ability of seamlessly connecting new architecture with the often ancient background.

### **Mirror image**

A designer has various design options to match new elements to the surroundings. The obvious choice is to look for a brick of the same size and colour as the surrounding existing buildings. Narrow, elongated bricks or conversely, large sizes can help the new architecture blend subtly into the town or village. The same goes for a colour spectrum that matches the historical façades, such as red, brown or ochre shades.

### **Balancing with shapes**

Another way to blend the new architecture is to match the design's formal language and scale. Shapes that match the architectural features of the surroundings, such as curves, segmental arches, or classic brick patterns, create a modern look that feels familiar while giving a nod to the surrounding context. Repeating shapes from the surroundings, such as arched windows or decorative façade details, can also contribute to visual continuity. New architecture thus blends into the historical framework without literally imitating it, creating a respectful but contemporary interpretation.

### **Copying style features**

A design that takes into account the volumes and lines of the surrounding buildings - for example, in heights, roof shapes, and façade layouts - can also create harmony between old and new. One way to do this is by using stepped gables, or gabled roofs, or matching building heights to those of the surrounding properties. Even as a detached feature, architecture with these stylistic features can evoke strong memories of the past.



The Military Hospital in Bruges is a beautiful illustration of the revival of classical design language and elements.  
Design: Groep 3, Bruges



### **Combining materials**

Finally, it is a thought-provoking idea to combine contemporary designs in brick with natural materials such as wood or copper. This creates a balanced transition between historic and contemporary. These materials enhance the warm and authentic look of brick and can add an extra layer to the design. An interplay of materials has the power to subtly insert modern architecture into a historic setting without being too contrasting or heavy-looking.

### **Brick: timeless, versatile and tactile**

Apart from its architectural design possibilities, brick offers many advantages as a material. Used for centuries, brick has proven to be sustainable and timeless. Due to its adaptability, it can serve as a proverbial bridge between different building periods without evoking visual conflicts. Moreover, brick retains its aesthetic quality over the years, enhancing the timeless look of the area.

The rough texture and warm colours of brick make new architecture tangible and inviting. With variations in finishes, such as smooth, rough or glazed, brick can create a subtle play of light and shade, making the façade more vibrant. In a historic context, the texture of brick gives new buildings an artisanal look, referencing the past and reinforcing the connection to history.

Finally, modern brick architecture offers flexibility to create patterns, such as in masonry bonds, which can align with historical details in surrounding buildings. Classic masonry bonds, such as the cross bond or Flemish bond, are visual references to traditional building techniques. Applied in a new project, these bonds create a subtle connection to the architectural language of the surrounding buildings.





ZAmpone architecture & Ark architects designed a modern brick architecture for Municipal Primary School De Springplank that focuses on a play of patterns.



(Ceramic high-rise construction)

Brick skims high peaks

High-rise buildings are a solution for using open space more sparingly. Brick is not only aesthetically attractive for creating such vertical volumes, but the clay product is also functionally valuable thanks to strong features like fire safety, ease of maintenance and adaptability to extreme weather conditions.



### Ceramic building shell

We are all familiar with the images of the first brick high-rise volumes from American metropolises. In Belgium, too, tower blocks finished with facing brick have been taking their place among neighbouring glass and natural stone buildings for a few years now. Architects, developers and building managers are discovering all the advantages of brick in a sustainable building concept and in controlling the total cost of ownership. Moreover, brick gives the designer unlimited freedom to create a robust and timeless look. Not insignificant in an urban context where sustainability and authenticity are sought after. But brick façades or brick slips are more than an aesthetic shell, they also have a technical function.

### Lightweight solutions

A sustainable and high-quality design for a high-rise building with brick cladding requires some points of attention. In high-rise projects, the overall weight of the façade is important. Traditional bricks add a lot of weight, which puts extra strain on the foundation and structure in taller buildings. The higher investment in the foundation can be reduced by working with lighter brick slips or bricks in the thinner Eco-brick format. Visually, they offer the same appearance as classic brick without compromising on stability and safety.

High-rise buildings are exposed to a lot of wind pressure, especially at higher elevations. A brick design deals with this with the application of sturdy anchors, mechanical anchors or support systems. These help capture and distribute wind pressure across the building structure.



Pierre Blondel Architects finished the façades with a combination of blue glazed ceramic facing bricks and white plasterwork. The dual use of materials points to the interaction between the city and the urban periphery.

### **Fireproof solution**

A strong advantage of brick in high-rise buildings is its fire reaction and resistance. Brick does not contribute to the building's fire load. After all, it does not burn and does not produce toxic fumes or smoke at high temperatures. This benefits not only the safety of occupants and employees in the building, but also that of the emergency services.

Correctly constructed masonry also shields more risky layers in the underlying construction, such as insulation or sheeting.

### **Aesthetic freedom**

Brick offers a wide range of colours and textures, ranging from smooth to rough and from traditional to contemporary. In high-rise buildings, this versatility can create an expressive, playful façade or, conversely, a calm, uniform appearance.

Designers also have many creative options in the method of bricklaying. Patterns such as herringbone, stacking bond or vertical brickwork add dynamism and sophistication to the façade design. This makes it possible to create distinctive architecture without adding construction complexity.

The use of colours, textures and patterns plays an important role in the scale perception of high-rise buildings. Subtle details make a building look less massive and more in keeping with the human scale.

In addition, the impact on the surroundings can be softened by combining brick with other materials, such as wood and steel. These combinations give brick a new balance and increase the aesthetic flexibility of the design.





The use of a false joint creates a seemingly simple stacking of square bricks in the façade. Design: Oskar architecten, Dilbeek



(Long, narrow facing bricks)

The versatility of horizontal facing bricks

The unique proportions of long, narrow facing bricks create a dynamic interplay of lines and offer architects versatile options for designing façades. This distinctive masonry format is more than just an aesthetic choice.

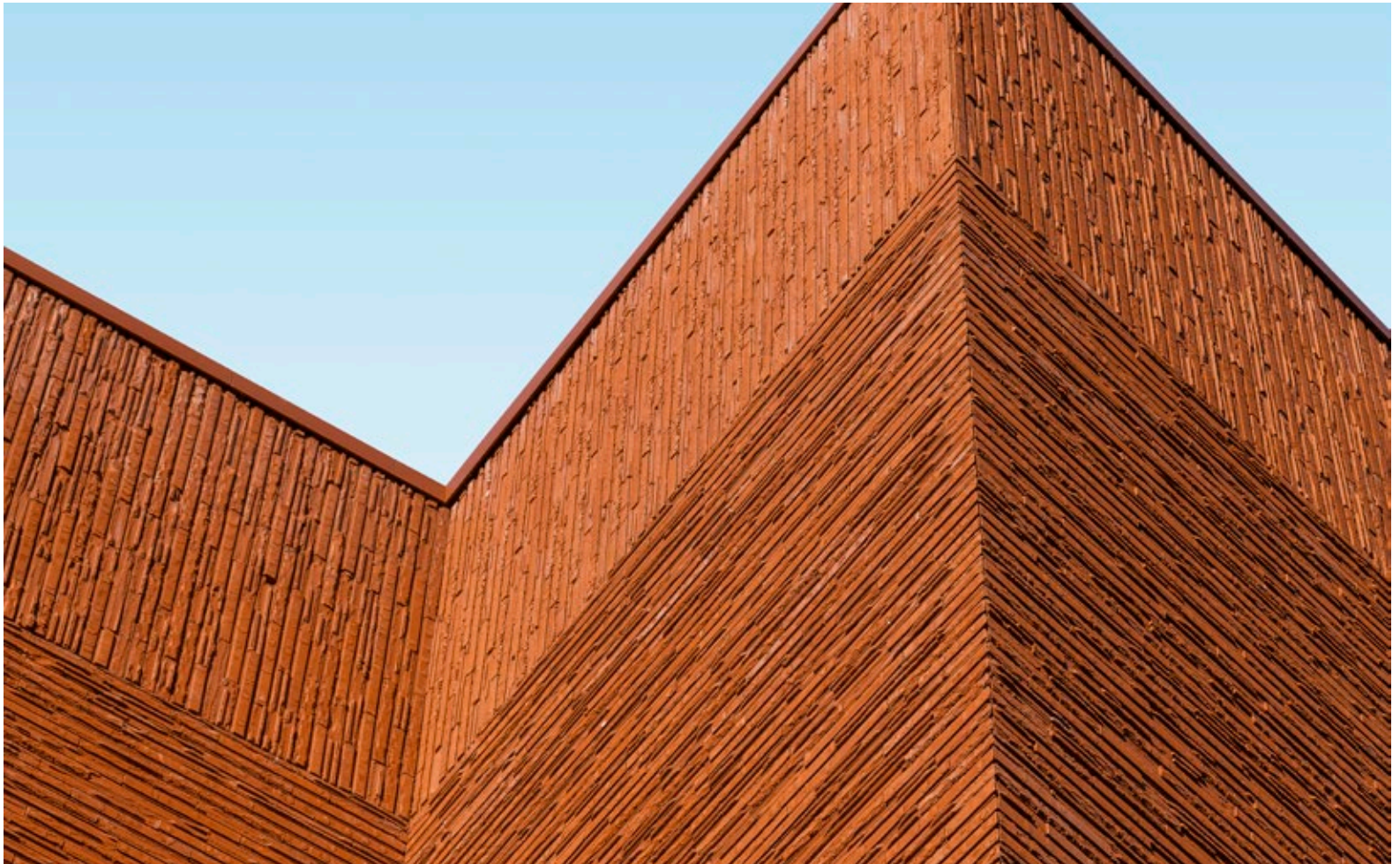
### **Rough, distinctive, and elegant bricks**

The use of long, narrow facing bricks gives buildings a distinctly horizontal character. By visually emphasising the width of a building, façades appear longer and acquire a strong vitality. This effect is particularly valuable in smaller houses, where aesthetics are made more difficult by geometry. The right choice of brick size offers a way to offset simplicity in geometry with strong visual dynamism.

Facing bricks like Cassia, which combine varying textures and surfaces, enhance the horizontal character of a building. This is primarily due to the distinct size of 400x95x48 mm. A second exclusive feature is how the sides are finished. Where one side is roughly planed, the other has a broken structure. Combining the two sight sides in the façade surface creates a façade that is anything but monotonous. The varied appearance plays on optical illusions and changes the appearance depending on the incidence of light. This can be further refined by the designer by using minimal mortar or bonding.

### **Stretched verticality**

Although long facing bricks are often associated with horizontality, they can also contribute to a sense of height. Architects often combine horizontal bands with vertical brickwork to create a complex interplay of lines and shadows. This alternation emphasises the height of a building and gives the façade a sophisticated, layered structure. This kind of experimentation provides the freedom to create visual complexity without losing sight of the simplicity of the design.



The Cassia facing bricks give every façade a hyper-individual identity - both due to the distinct format and to the way the sides are finished. For the façades of the new Sportdoze sports complex, ESSA ingenieurs en architecten played with lines, textures and relationships, emphasised even more by the Cassia Red facing brick.





### **Timeless aesthetics**

The minimalist and clean look of long, narrow facing bricks makes them particularly suitable for contemporary and industrial designs. However, their timeless character also fits in well with restoration projects. Customised variants of these bricks are sometimes used in historic buildings to preserve the authentic look while adding a sophisticated, contemporary twist. In this way, they combine tradition with innovation.

### **Regional identity and local typology**

The use of long, narrow bricks also offers architects the opportunity to connect a building with its surroundings. Choosing regional variants or locally produced bricks creates a sense of continuity and connection with the site. This not only gives a building a unique identity but also strengthens its relationship with the local community and history.





KAAN Architects (NL) chose long, narrow Waterstruck facing bricks for library Utopia in Aalst to elegantly integrate the 19th-century Pupil School while rejuvenating the urban landscape.







# (Architect index)



## [I/O]-architecten

### Sint-Niklaas

[I/O]-architecten always tries to find the right answer based on a specific approach, which is developed based on the input and output of the various parties, the environment and an intense reading of the programme.

(project page 32-35)



## architecten De Bruycker - De Brock

### Bruges

Peter De Bruycker and Inge De Brock have been working in tandem for over thirty years. They have deliberately kept their agency small, with the aim of being able to slow down in a world that is speeding up. This allows them to give each project and every detail the attention it needs.

(project page 72-73)



## a[RT]

### Jabbeke

Architectural firm Rogiest+Team is a deliberately small firm that is constantly searching for innovation. They focus on accessible, practical, legible and liveable concepts, with attention to affordability in terms of both design and materials.

(project page 122-123)



## Architect Frédéric Vander Laenen

### Westerlo

Architecture with soul, inspired by nature, the environment, the light, the view and the orientation. A design is created where the outdoor space meets the interior. They form a whole. The client is central to this. The walk, life.

(project page 74-77)



## ampe.trybou architecten

### Oudenburg

ampe.trybou architecten strives for simple, meaningful designs and poetically pragmatic architecture that moves people. Diverse assignments in nature and scale, each with a specific approach or angle.

(project page 110-113)



## Architectuur by melanie

### Keerbergen

Well thought-out design that works for the client, with extensive guidance for a high-end result. Puts the client and family at the centre of the design. Offers guidance until the last baseboard is installed, for both new construction and renovations.

(project page 90-93)



## Arch StryTect

### Sint-Niklaas

Kitty Strybol emphasises light, visibility, optimal use of space and lots of daylight in her modern architecture. Thirty years of experience in residential buildings, small-scale multi-family housing and industrial construction.

(project page 126-127)



## Ark architecten

### Dilbeek

Ark architects is a versatile architecture studio characterised by a fresh approach to timeless architecture and innovative functionality, with social involvement, sustainable living and productive architecture at its core.

(project page 30-31)



## Architectenburo Koen Van der Mynsbrugge

### Geraardsbergen

Focuses on architectural quality, functionality and refined technical details. Sees architecture as a creative process that attempts to mediate between people, their experiences and their environment.

(project page 66-69)



## assar architects

### Antwerp, Brussels, Liège, Luxembourg and Paris

The assar group employs 155 people across five sites in Belgium, Luxembourg and France, with a focus on inclusive architecture and sustainable development, taking into account the social, environmental and economic context.

(project page 104-105 and 118-121)



## B-architecten

### Antwerp, Brussels, Ghent

A fixture in the architectural world for 25 years, with well-known designs such as the ones for the Brussels Beursschouwburg, Muntpunt and De Grote Post in Ostend. Has four divisions (B-architecten, B-bis, B-city & B-juxta), three offices and more than 100 employees.

(project page 60-61)



## Enplus Architecten

### Ghent

Takes an enthusiastic and passionate approach. The necessary knowledge and experience, combined with a playful light-heartedness.

(project page 78-79)



## COMPAGNIE COSTUME\_ tailored architecture

### Bruges

Designs 'Brutesse': blending honest, brutal creations with pared-down finesse. Architecture with a strong visual value, tailored to the client's needs and integrated into any urban context.

(project page 96-97)



## ESSA ingenieurs en architecten

### Diest

ESSA ingenieurs en architecten designs challenging construction projects with an integrated approach to architecture, design, stability, technical studies and landscaping. For four decades, ESSA has been responsible for modern, high-quality and affordable projects.

(project page 44-47)



## Daniel Ost Group

### Knokke

Daniel Ost Group is an internationally renowned company specialising in high-end floral art and landscape architecture with an artistic approach. From exclusive private gardens to large-scale landscape projects.

(project page 114-115)



## EXTERIOR LANDSCAPING

### Kanegem

Small but dynamic and creative design and consultancy agency for landscape and garden architecture. Founded in 2000 by Stijn Verhalle, mainly active in residential private projects and company gardens.

(project page 100-103)



## DETOO

### Lochristi

DETOO is the largest architectural firm specialising in healthcare and educational construction projects. The firm strives to truly understand how people live and what they need in order to provide an architectural solution.

(project page 88-89)



## Groep 3

### Bruges

Designing with enthusiasm and passion. Creating sustainable, customised architecture that centres on people and experience. With creativity, craftsmanship and a keen eye for sustainability, Groep 3 strives to create added value for users and the environment.

(project page 38-39)



## Erfgoed en Visie, formerly bow architecten

### Antwerp, Malle en Ypres

In 2024, the team from bow joined the team of Erfgoed en Visie, forming a broad team of architects and architectural historians specialised in restoration, repurposing and advising on heritage projects. Part of the knowledge network United Expert Group.

(project page 106-107)



## HAMBLOK - PISSENS architecten

### Vilvoorde

With an eye for detail and with a sustainable approach, wants to create a beautiful, healthy and liveable living environment where buildings, landscape and people merge.

(project page 124-125)



## Interieur versus Exterieur architecten

### **Grimbergen**

IvsE architecten is a young, inter-professional and deliberately small-scale architectural firm that focuses on private total projects, supplemented by office projects, apartment construction, commercial projects and public tenders.

(project page 64-65)



## PARVIS

### **Soignies**

The architectural firm distinguishes itself through an approach aimed at harmonious integration into the local context and respect for the environment. The projects, varying in scale and nature, focus on responsible and sustainable architecture.

(project page 116-117)



## JAHNKE-LEDANT Architects

### **Liège**

JLA is a progressive alliance between two architects from different continents. Their work is diverse and designed with a surprising, integrative and sustainable approach.

(project page 80-83)



## Pierre Blondel Architectes

### **Brussels**

More than 30 years of experience with the architecture of grouped housing and facilities in urban environments, both renovation and new construction. Attempts to demonstrate that it is possible to design high-quality architecture even in difficult urban situations.

(project page 56-59)



## Jean-Philippe Coache architectes

### **Marcq-en-Barœul (FR)**

Broad knowledge of the profession is combined with a multidisciplinary vision in both private and professional new construction, expansion and renovation projects. Combines specialised expertise with a broad view of related fields.

(project page 84-85)



## Piet Baily | Project architects

### **Knokke-Heist**

Founded by Piet Bailyu, who has over 30 years of experience, the agency translates the unique qualities of each location into sustainable and refined architecture. Each design is based on expertise, an eye for detail and a strong focus on context and quality.

(project page 108-109)



## JUMA architects

### **Sint-Martens-Latem**

Julie van De Keere and Mathieu Luyens create designs under the JUMA label that balance aesthetics, functionality and cost price, with refined details that radiate understated luxury. According to the client's wishes, realised without construction stress.

(project page 26-29 and 50-53)



## Sophie Van Noten Architect

### **Antwerp**

Specialises in private projects and renovations of historic and architecturally unique buildings. Creates total solutions with a timeless and elegant signature in which architecture and interior harmoniously complement each other.

(project page 86-87)



## Oskar architecten

### **Dilbeek**

The designs of Oskar architecten revolve around people, with well-being as the cornerstone. The focus is on two types of projects: education and work+life, in which human relationships and interactions are central.

(project page 54-55)



## Stad Gent, FM Onderwijs

### **Ghent**

FM Onderwijs is part of the Department of Facility Management and is responsible for facility services at all urban schools and daycare centres, the youth services and educational services of the city of Ghent.

(project page 98-99)





## Stael Architect

### Melle

Stael Architect is an architecture and interior design studio specialising in villa construction with a strong focus on materialisation and detailing. Through comprehensive guidance, they manage to completely unburden the client in a complex construction process.

(project page 94-95)



## TUYN architecten

### Kortesseem

TUYN architecten create gardens and landscapes with a unique twist. Aesthetically appealing, functional and sustainable, as an extension of the client's personality and wishes.

(project page 70-71)



## Steelandt. Declercq Architecten

### Ostend

Architectural firm that is always looking for new functional, affordable, spatial and contemporary designs with an aesthetic twist, for both new construction and renovation, from homes to offices and from apartments to retail.

(project page 40-43)



## VLEUGELS SANDRA

### Aarschot

Architect Sandra Vleugels approaches architecture as an artistic puzzle, a translation of the needs and desires of the soul into an aesthetic physical creation of high-quality, sustainable materials that are in harmony with the environment.

(project page 62-63)



## Studio Bjorn Verlinde

### Kortrijk

Interior and object design agency established in 2012 for commercial and private commissions, characterised by geometry, structure, colour, light and the use of empty space.

(project page 96-97)



## ZAmpone architectuur

### Sint-Jans-Molenbeek

ZAmpone architecture is a multidisciplinary team that links sustainable thinking to architectural quality. It focuses on socially relevant projects in a mostly urban context, such as schools, special youth care and day-care centres.

(project page 30-31)



## SVR-ARCHITECTS

### Antwerp

A dynamic team of 32 experts working on innovative projects in Belgium and abroad. Seeks creative solutions for complex programmes and focuses on wellbeing and change-oriented building for healthcare, research, utility and housing.

(project page 118-121)

projects.



(JUMA architects)







© Eugeni Pons - Styliste: Susana Ocaña



(JUMA architects)

The brickwork is extended inwards to blur the boundary between indoors and outdoors.

**Contemporary interpretation of a classic theme**

This house does not have sleek volumes with flat roofs, but a charming design with a classic gable roof and traditional materials, such as solid oak beams and burgundy roof tiles. A contemporary interpretation of a classic concept, thanks to the minimalist design of the different volumes.

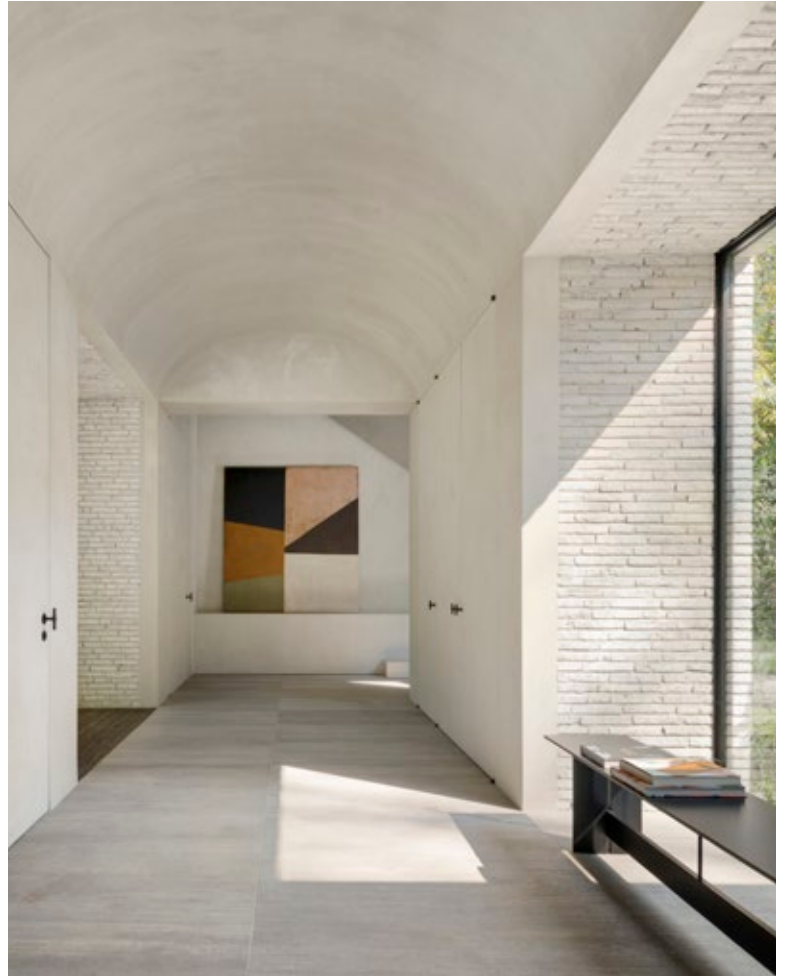
The front and rear façades are constructed in a light facing brick from the Imperium collection. The same brickwork is extended inwards in a few carefully chosen places to blur the boundary between indoors and outdoors. The side walls have wooden cladding with vertical mouldings into which the window openings fit perfectly. The nuances of brown tones create a warm and earthy look.







© Eugeni Pons - Styliste: Susana Ocaña



# (ZAmponse architectuur + Ark architecten)

At Sterk Primary School, the oldest part of the school complex has made way for a new building that fits in seamlessly with the existing buildings. These existing structures have a wide variety of styles and materials: each extension has been given its own shape, scale and character over the years.

## **Playful pattern**

The new building brings balance to this with a subtle and refined use of materials. The floating volume on a transparent base creates a clear and uncomplicated whole. The façade is clad with white, slightly glossy, enamelled bricks in a playful pattern – designed by the architect – that catches the sunlight in a subtle play of light and shadow. This changes the appearance of the building from different angles and throughout the day.

Numerous places to relax have been created around the building, paved with Aquata Red clay pavers, chosen for their water-permeable character.





The new building is characterised by a subtle and refined use of materials, which brings peace and clarity to the heterogeneous school complex.





([I/O]-architecten)



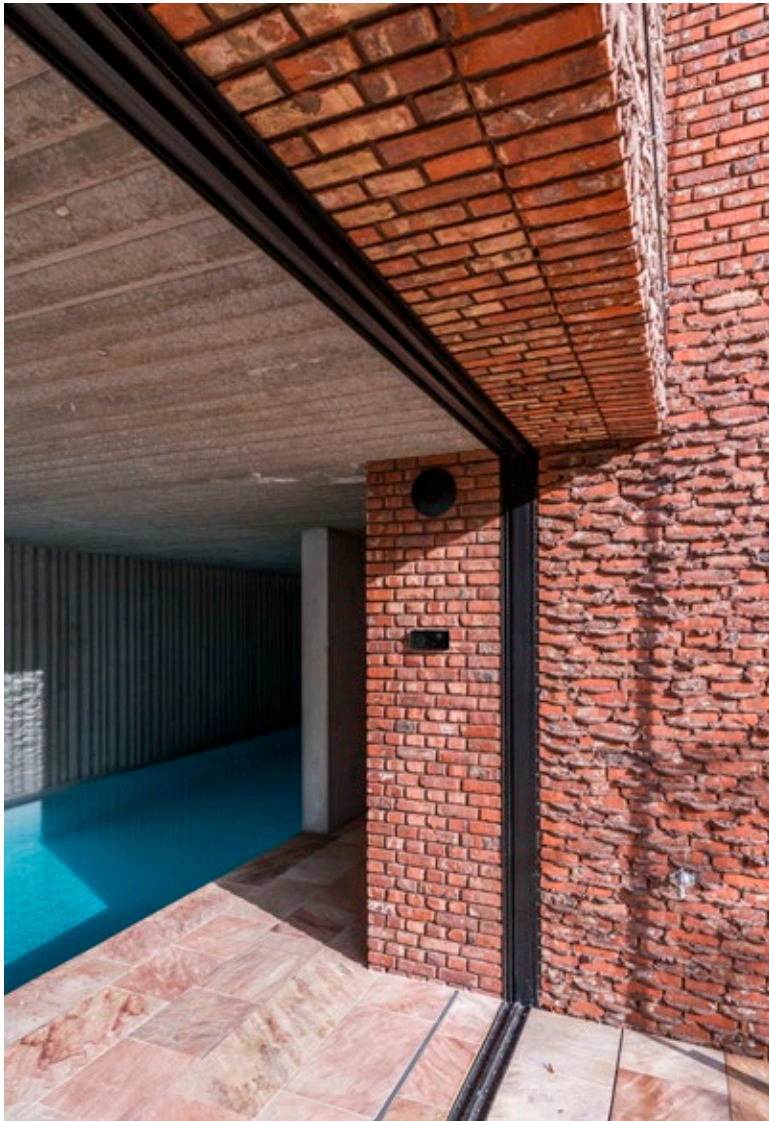






([I/O]-architecten)

The versatile facing brick connects the interior with the exterior and the underground with the aboveground.



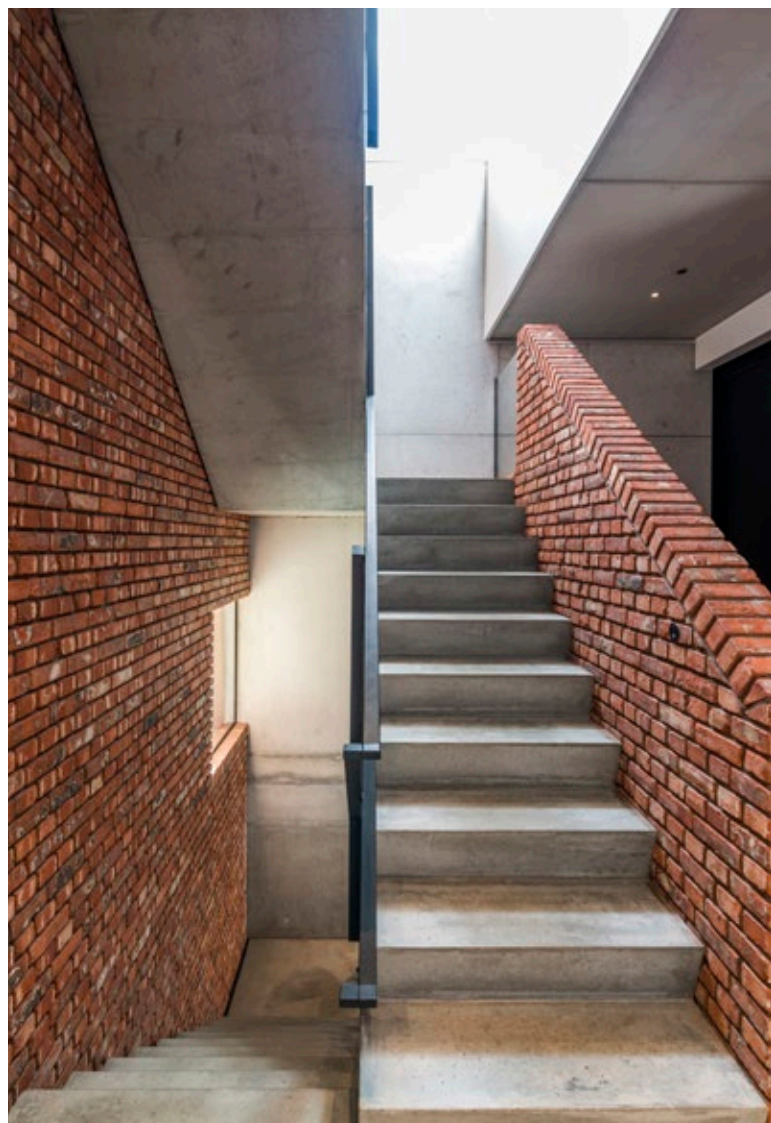
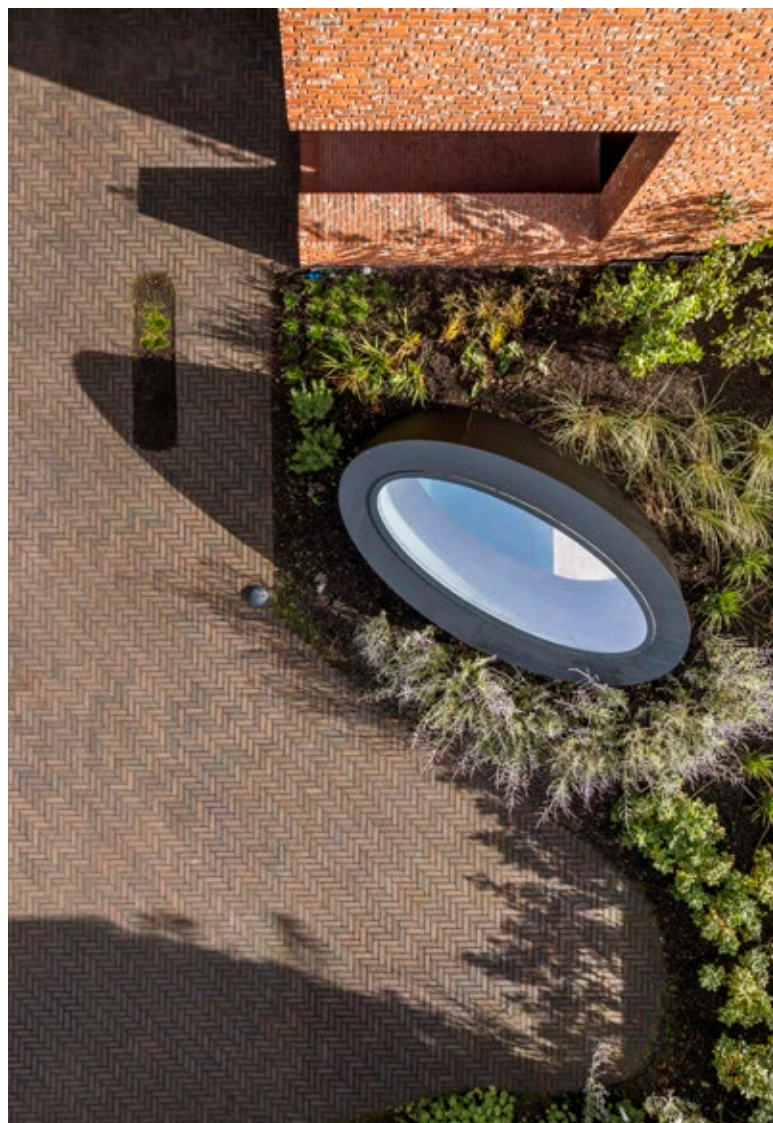


This villa, designed by architect Jao Smet, combines two storeys in an L-shape. In the space between the two wings is an intimate English courtyard with a concrete waterfall of planters, benches and steps. The concrete contrasts with the deep red Colorada – a versatile, sandless and rough facing brick.

**A playful play of joints**

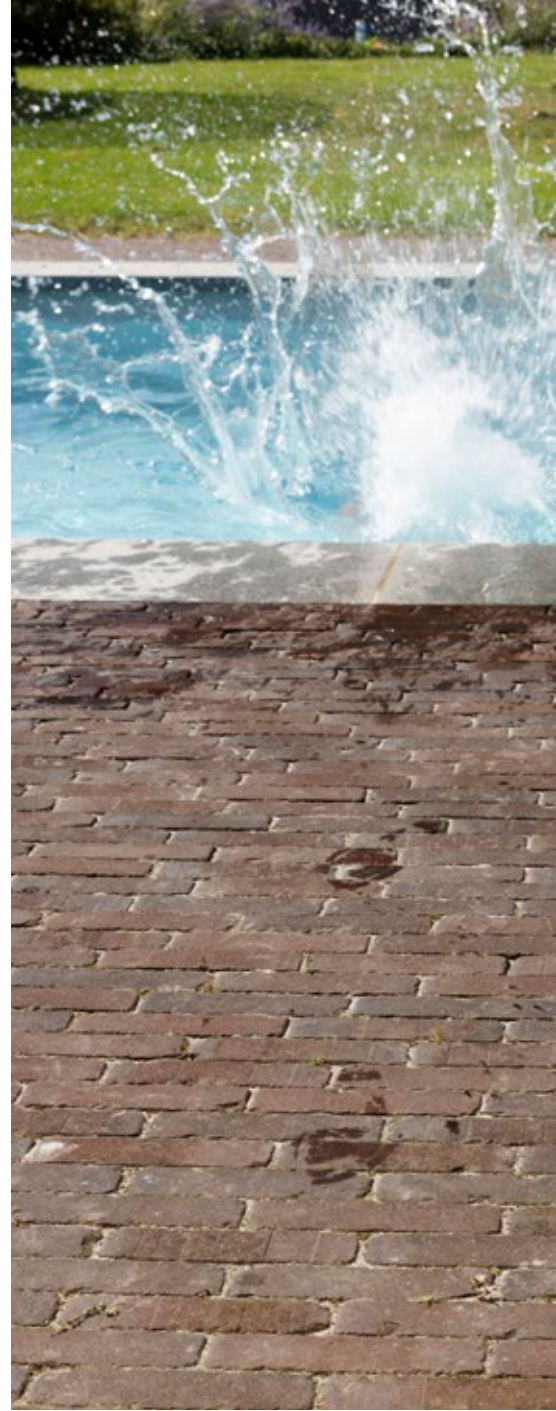
Above ground level, the façades are given a coloured smear mortar with deep joints, while below, bold bulging joints give the façade a robust character. The contrast with the slim black anodised aluminium exterior joinery emphasises the volumetry.

The Aquata Brown water-permeable clay pavers are similar in tone and colour to the natural surface, with a dominant brown colour and nuances, allowing them to blend into the environment. The Colorada facing brick is often used in the interior, where it contrasts beautifully with the white plastered walls.





The brown nuances of the clay pavers give the whole a rustic look.



**Unique touch in the laying method**

The residents of this villa in Eghezée were looking for authentic-looking clay pavers for their garden. L'Elan Vert, a landscaping contractor from Hamois, chose Atlas tumbled clay pavers, which were laid to follow the lines of the swimming pool.







## (Groep 3)



The red facing brick, which matches the authentic bricks of the old barracks, contrasts with the white façades of the new building.



The former military hospital on Peterseliestraat in Bruges has been given a new lease on life as a housing project. The combination of new construction and renovation offers space for 76 social housing apartments, four homes and six commercial spaces, each with a varied typology.

The new buildings are separate from the historical structures, preserving the site's character. Thanks to the carefully adapted building profiles of the new construction, the urban landscape beyond the street walls remains untouched.

#### **Renovation and authenticity in perfect harmony**

New construction and renovation meet in the combination of two façade styles. The red Elignia Robinia was chosen for the renovated rear façades, which perfectly matches the authentic bricks of the old barracks. A carefully chosen contrast with the façades facing the barracks, where the white Elignia Arctica White matches the white extension in a light and fresh whole. The interaction between the two façade finishes was chosen to establish a dialogue with the urban context. Where the white façades form a beautiful and strong contrast with the old barracks, the red façade seeks to re-establish the old dialogue with the buildings behind it.

The interplay of the sloping roofs is typical of Bruges and is accentuated in the red façade by the white outline of the roof edges. The sloping roofs are finished with OVH Classic Braised Blue; OVH Classic Natural Red was chosen for the renovation of the barracks.





(Steelandt. Declercq Architecten)









# (Steelandt. Declercq Architecten)

This building on a corner lot combines a dentist's office with two homes. The indentations in the building volume ensure that both the office space with floor-to-ceiling windows and the homes on the upper floor can optimally enjoy the outdoor area, without disturbing each other.

## **Strong identity for each entity**

The practice space and the homes each have their own entrance and identity, which is reinforced by the use of colour in the exterior joinery. The surgery is characterised by a large canopy and the protruding brickwork of Elignia Arctica White. The use of the same facing brick at the entrance of the homes, extended inwards, blurs the boundary between indoors and outdoors.







The protruding  
brickwork completes  
the architectural picture.



(ESSA ingenieurs en architecten)





The facing brick creates a playful dynamic in the façade design.





# (ESSA ingénieurs en architecten)

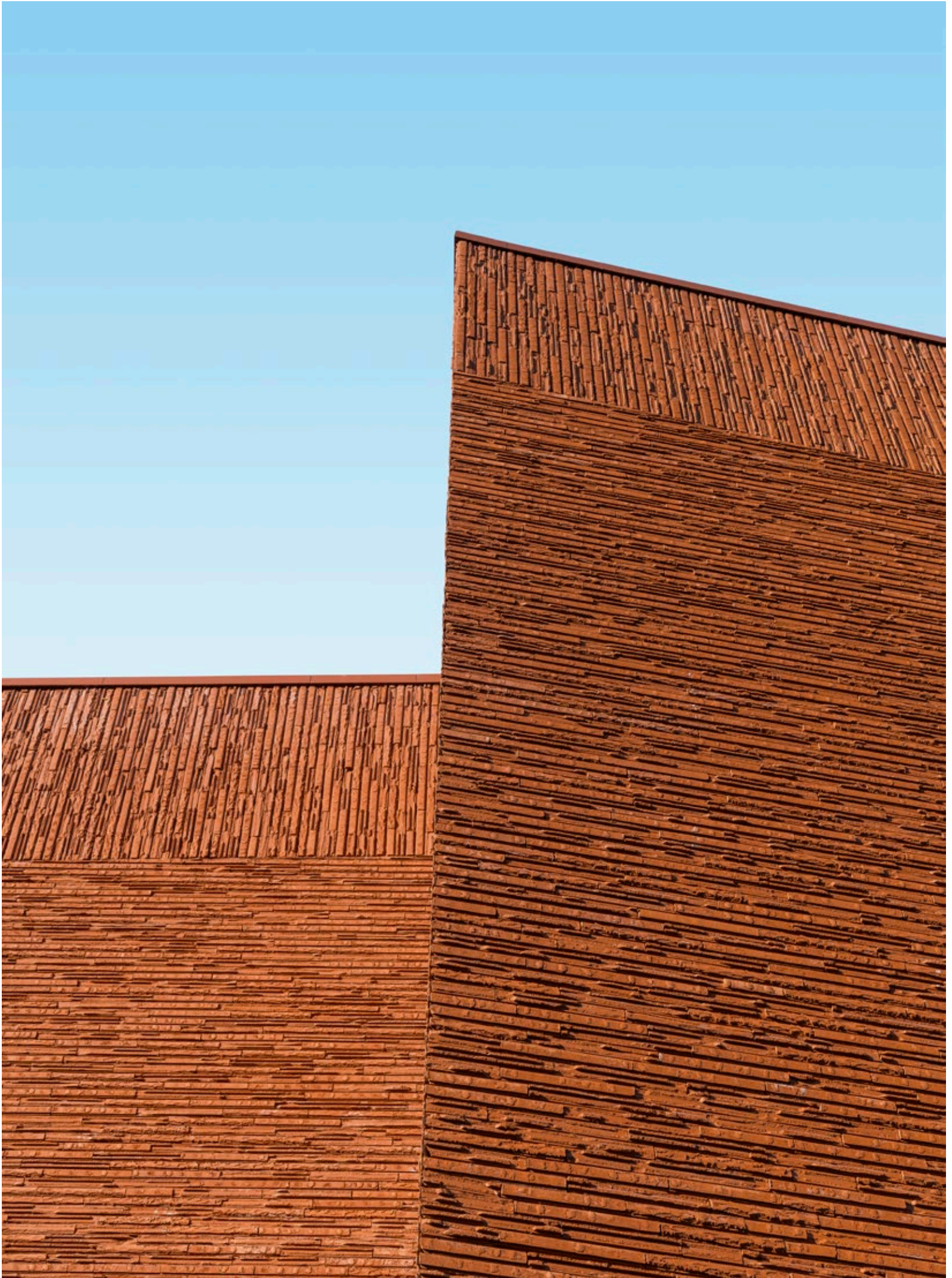


ESSA engineers and architects designed a brand-new complex that forms the heart of the indoor sports experience in Blankenberge. The project includes a unique saltwater pool, a top-class sports centre with a martial arts hall, a café-restaurant, sports department offices and meeting rooms. A brightly lit foyer is the central axis of the complex and connects the various functions with an existing sports hall, while also creating a passageway between the skate park and the park area behind it.

## **Play of light and shadow**

ESSA engineers and architects created a dynamic interplay of volumes and façades, and made grateful use of the Cassia facing brick. With its unique combination of a roughly planed side and a side with subtle fracture lines, the brick was used alternately to create an intriguing contrast. This well-considered choice not only brings a playful dynamic to the façade design, but also adds a striking relief. The constantly changing play of light and shadow enhances the lively aesthetic, while the warm terracotta colour harmonises with the facing brick of the existing sports hall and the concrete shades of the adjacent skate park, creating a coherent architectural whole.







(Sweco)







Those who like to walk in Wenduine can look out over the polders, forests and endless horizon from the Spioenkop. The distinctive little white pavilion with a red roof adorns the second highest dune on our coast. The hiking trails through the dunes, the animal park and the car park were resurfaced with Varia Pure Waterstruck clay pavers, chosen for their wear-resistant character.

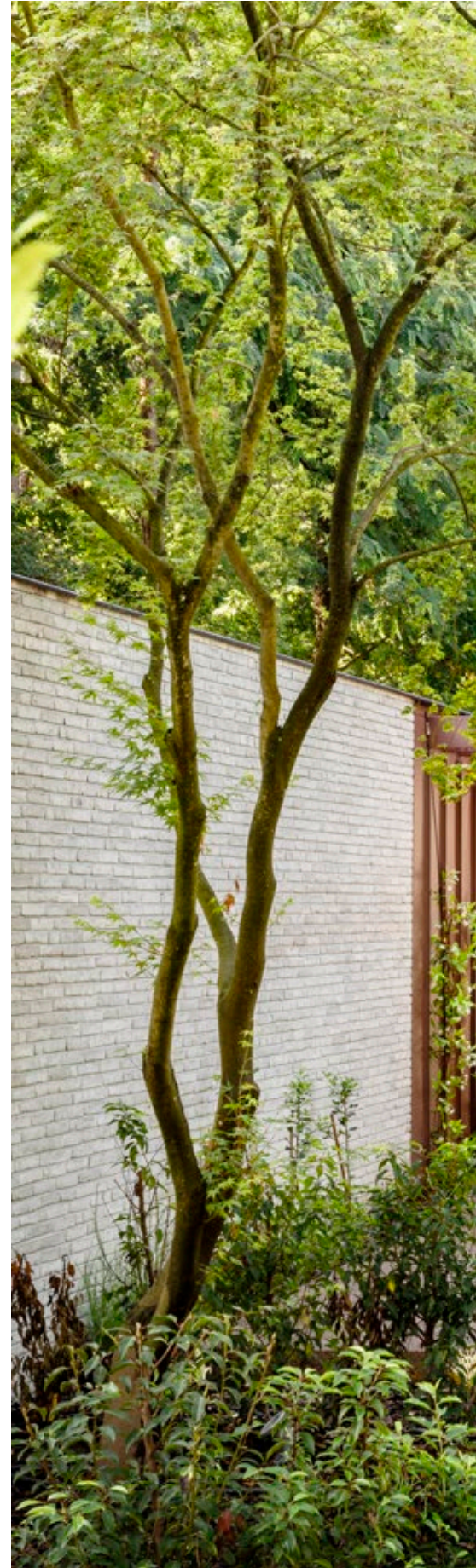
**Accessible natural beauty**

The choice of this natural-looking brick was inspired by the dunes. The hiking trails blend seamlessly into the environment, allowing nature to take over. The paths are a lot steeper than the average driveway, but thanks to the clay pavers, they are easily passable, resulting in an accessible piece of nature where visitors can effortlessly enjoy the vast landscape.

The carefully chosen colour of the clay pavers enhances nature, rather than displacing it. It does not have to make way for the footpath, but instead completely absorbs it.



(JUMA architects)



**Clean lines**

In the wooded surroundings of Waasmunster, a house built in 1987 was transformed into a contemporary gem in the countryside. The wish list for the transformation included more bedrooms and an outdoor swimming pool, and above all, more contemporary architecture. The existing volume was expanded and a new annex was added. By continuing the materials and lines of the existing home, the annex fits in seamlessly.

The transformation included cutting off the existing ridges and replacing the roofing with zinc, which was also continued on parts of the façade. The new facing brick, Imperium Albus White, gives the house a fresh look in the midst of the surrounding nature.





© Annick Vernimmen

The house was redesigned into a contemporary whole, with clean lines and zinc details giving the architecture a fresh and modern look.



(JUMA architects)



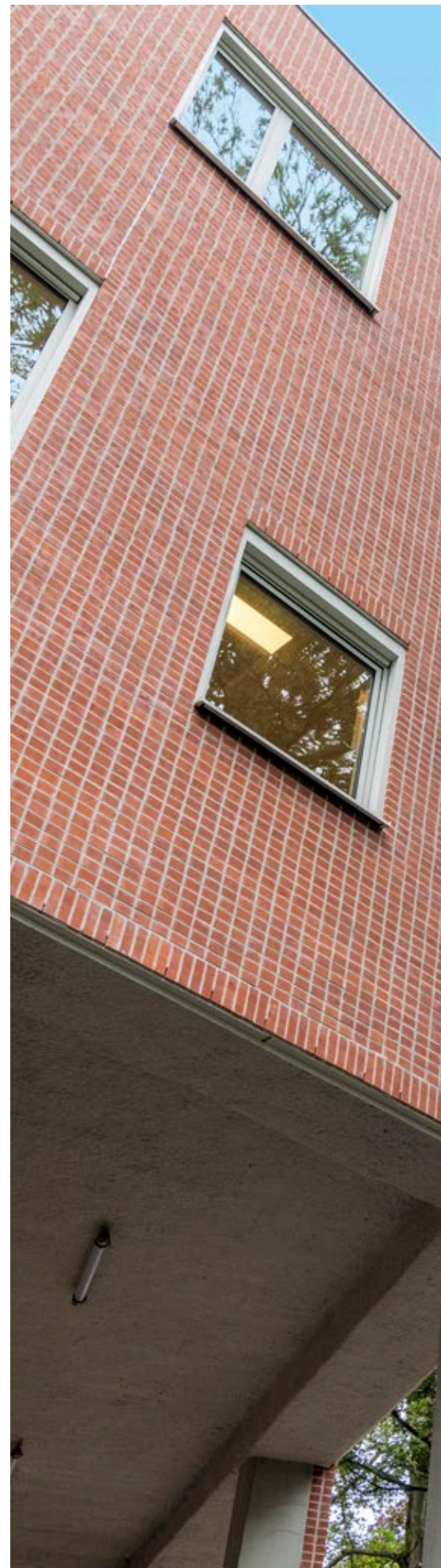




© Annick Vernimmen



(Oskar architecten)



The orange colour of the unfired bricks contrasts beautifully with the green surroundings.



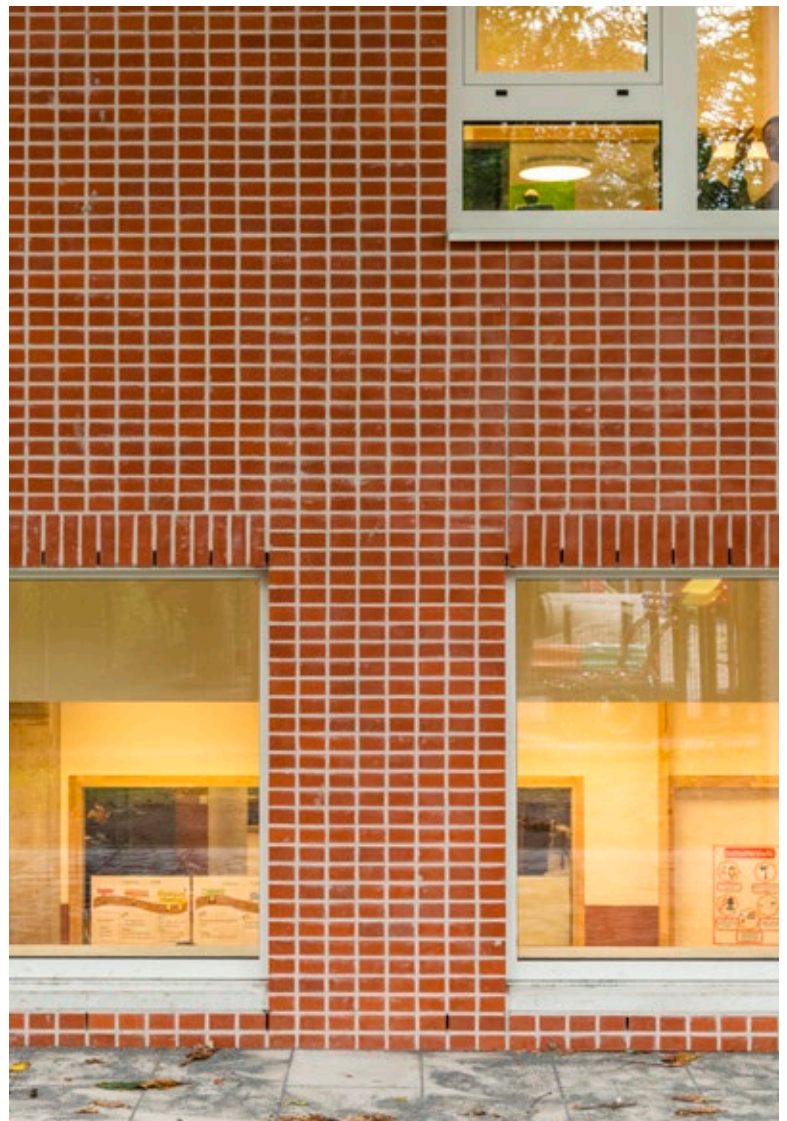


## Façade **Colorline** collection

The interior of the Atheneum Etterbeek has been designed as a dynamic learning environment, which is reflected in the playful composition of the windows. The placement of the windows not only creates interesting impressions from the interior, but also called for a matching facing brick.

### **Header bond brings tranquility**

To bring balance to the dynamic façade, Oskar architects chose a simple brick, placed in a brickwork pattern with a false joint. The brick façade provides a natural transition from the buildings to the green areas.





(Pierre Blondel Architectes)









# (Pierre Blondel Architectes)

This housing project in Evere takes the form of a folded ribbon. The configuration combines urban functionality with contemporary aesthetics in a very well-thought-out way, and creates zones that connect to existing public spaces, such as green coves and pedestrian passageways through the garden suburb. Varying building heights ensure optimal daylight in the apartments, regardless of their orientation.

## **Dialogue in materiality**

The finish of the façades emphasises the interaction between the city and the outskirts. Some of the façades are clad in blue glazed ceramic bricks, while other façades are finished in contrasting white plaster.





The housing project can be viewed from two directions: from the city to the outskirts and vice versa. The two different façade finishes emphasise this duality.





(B-architecten)

The interplay of varying roof pitches and staggered window openings gives each home its own identity, enhanced by walls of brick laid in a stretcher bond.







The sixteen park homes in Lieve Park in Ghent draw inspiration from the site's industrial history: a striking interplay of gables is a nod to the characteristic repetitive sawtooth roofs of the former factory buildings. The loggias in the gables are a striking architectural element. Each home thus gains an extra outdoor space: a sun terrace for one row of houses, a cool spot for another on hot summer days.

**Unconventional without harsh contrasts**

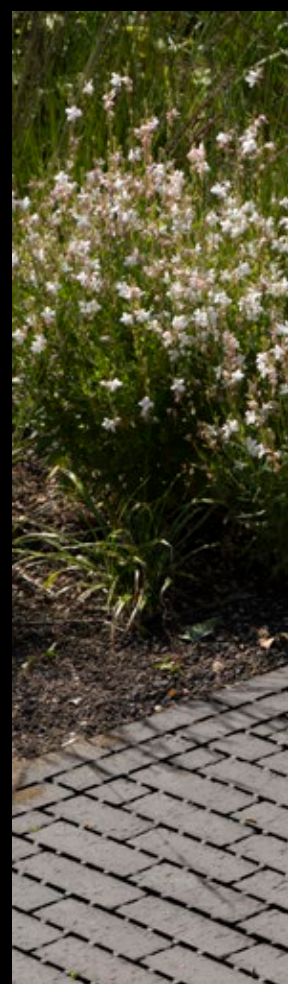
The individual homes form a single whole thanks to the uniform use of materials. The nuanced Elignia Nordica White brings softness to the façade cladding, while the rough suspended surface of some of the bricks provides a quirky character. The elongated format with narrow, deeper thin-bed mortar joints provides an elegant touch.

The soft white colour of the bricks is combined with the light zinc grey of the roof surfaces and the pastel green of the joinery and the loggia cladding. The colour combination accentuates the façades without creating harsh contrasts.



(VLEUGELS SANDRA)

Benches and plants around the candle chapel make it a peaceful spot in the area where anyone can come to reflect or relax.





The plot of land next to the Wicker Chapel in Ramsel has been transformed into a green zone with a candle chapel and outbuilding. Benches, carefully chosen paving and plants around the candle chapel make it a peaceful spot in the area. Anyone can come here to pray, light a candle, reflect or just take a moment to relax.

**A serene path through the greenery**

A path of Aquata Black clay pavers leads visitors from the street through the greenery to the candle chapel. Further on, the path connects to a sleek and functional outbuilding with storage space and sanitary facilities.





# (Interieur versus Exterieur architecten)



The villa refers to the Brabant coulter where it was built. The long, narrow facing bricks with their characteristic irregular shape lent themselves perfectly to this.

This modernist two-storey villa forms a visual unity with the garden house, which was built using the same materials. The black of the aluminium exterior joinery, profiles and sheet metal contrasts subtly and optimally with the reddish-brown facing brick.

## **Brabant coulter as inspiration**

The long, narrow Linaqua Vino, with its nuances of red, brown and purple, refers to the Brabant coulter – a region with varied landscapes and characteristic loamy, red-brown soils. This colour palette characterises numerous historical monuments and farms in the region.







(Architectenburo Koen Van der Mynsbrugge)

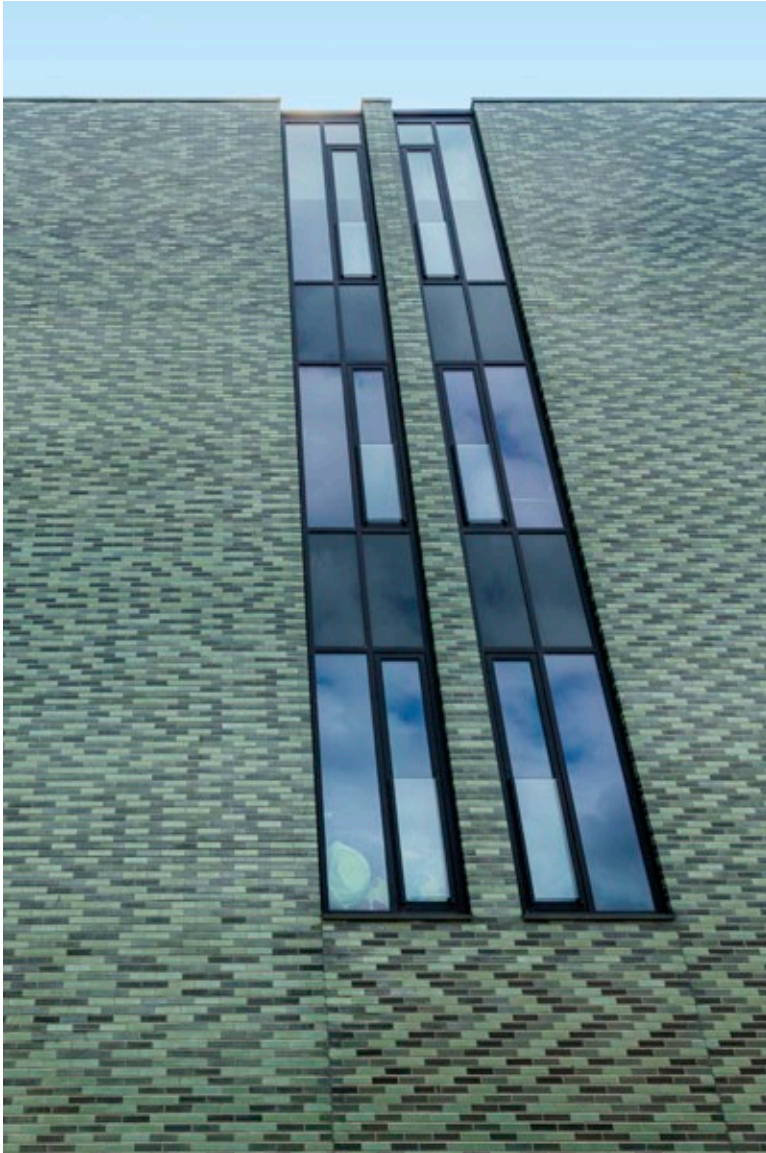








# (Architectenburo Koen Van der Mynsbrugge)



The new city library in Geraardsbergen was planned to be located between the administrative centre, the police building, the youth centre and the fire station. The entrance is through the Lelie building, a valuable piece of heritage that functions as a gatehouse. It forms a typical Geraardsberg alleyway that connects the library to the surrounding streets via an intimate courtyard.

## **Green beetle**

For the façade cladding, a maintenance-friendly material was sought that could stand the test of time without losing many of its characteristics, with a colour that blends into the surroundings. The choice fell on green glazed facing bricks in three shades, which give the building a shiny emerald green skin, like a beetle that has settled in the city. A nod to the historic façades of Geraardsbergen, where red and yellow bricks are often combined with strips of shiny green glazed bricks. From a distance, the building merges with the landscape; up close, it radiates tranquillity.





When the city's skyline is viewed from a distance, the new library blends seamlessly into the green background of the Oudenberg.





(TUYN architecten)

Clay pavers and decorative elements create a warm and inviting outdoor decor.

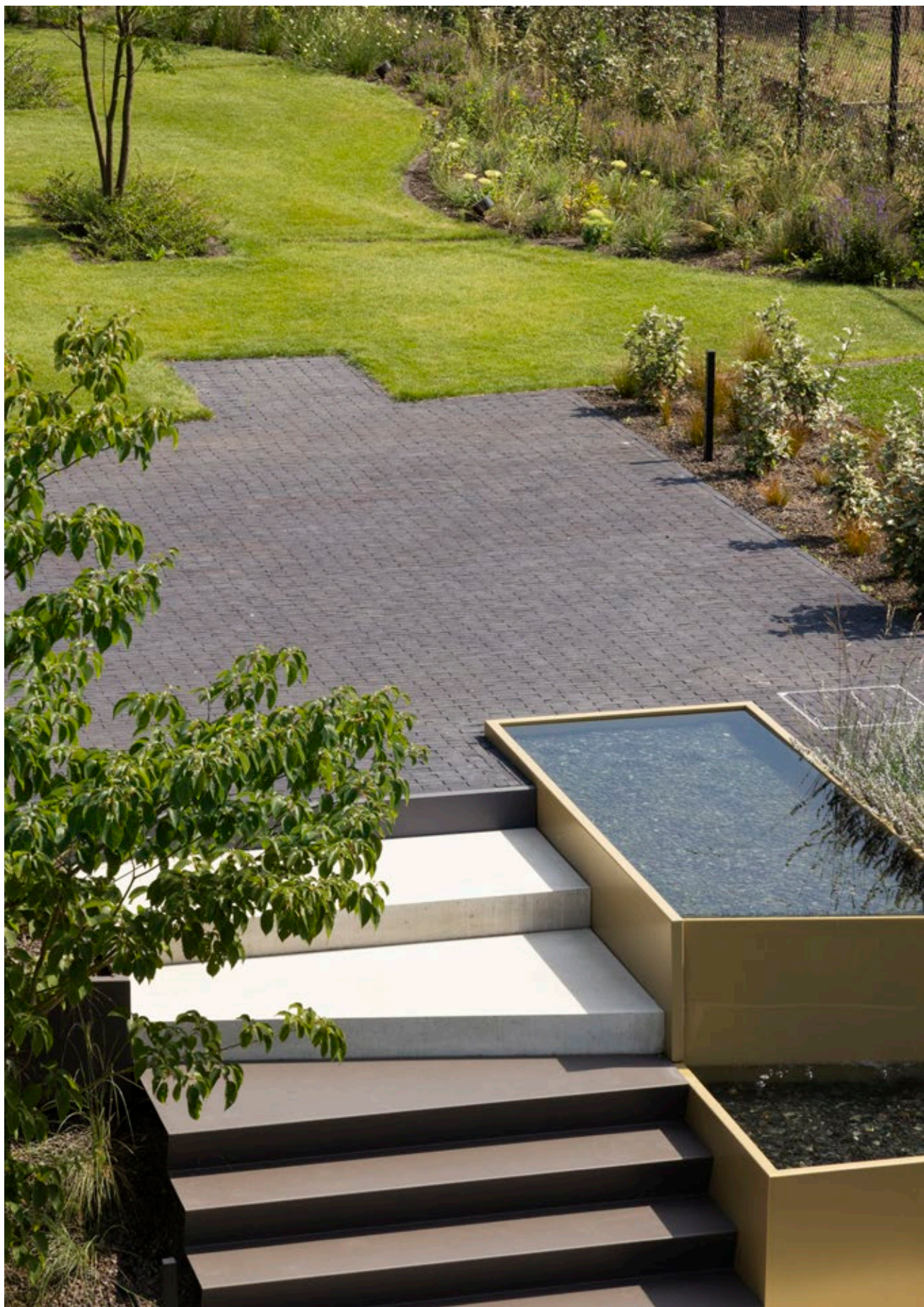


Wine merchant Licata Vini offers an exclusive setting for events in a beautifully designed patio. Stairs lead visitors to the garden area, where an outdoor kitchen takes centre stage – the stage for tasting and cooking, for cosy evenings full of culinary delights. The garden combines sleek architecture with playful lines.

**Clean contrast**

The outdoor space exudes a Mediterranean atmosphere, with carefully planned vegetation and decorative elements that create a warm, inviting setting. The dark Nero pavers contrast beautifully with the white steps and gold-coloured pond edges, while continuing the clean lines.







# (architecten De Bruycker - De Brock)



In the old village centre of Knokke, an existing semi-open building was transformed into a practice space on the ground floor and a dwelling on the upper floors. To the left of the building, three top gables adorn the streetscape; to the right of the plot is a prominent projecting side gable. To connect the two elegantly, architects De Bruycker - De Brock opted for a new concave façade.

## **Clinical white with a nod to the past**

A dominant canopy six metres high crowns the new façade, finished with vertically bonded White Glazed ceramic brick. The sterile-looking façade material refers to the clinical character of the dermatology practice on the one hand, but also to the façades of the first villas on the coast.

To instinctively fit in with the trio to the left of the building, the architect opted for a white-plastered gable, set slightly back. The space between the blind façade and top gable became a sunny terrace.

The façade is somewhat set back from the building line. With a tree, a bench and a lantern, the space is transformed into a southwest-oriented resting point in the street.







(Architect Frédéric Vander Laenen)









# (Architect Frédéric Vander Laenen)



This building houses an office building, a caretaker's house and a showroom for a plant nursery. The upper floor functions as an open-air showroom: an extensive roof garden where the various plant options come to life. Indoor houseplants were also planted in full ground.

## **Unattached for bolder expression**

The design of the building is organically inspired and in tune with its surroundings, with special attention to orientation and light. In the materiality, concrete, wood and brick come together in a harmonious whole.

For the façade, a rough, pure-looking purple-blue brick was chosen, which patinas beautifully over the years. The brick contrasts with the white concrete eaves and the slender columns, styled like trees supporting the roof garden. The open joint of the bonded facing brick emphasises the brick's coarse texture, colour and natural expression.

The purplish-blue hue in the facing brick is given added prominence thanks to the white concrete coping and supporting columns, an effect enhanced by working with the open joints.







# (Enplus Architecten)



At first glance, the Imperium Albius White façade brick immediately catches the eye, a finish that appears more tactile than a traditional white façade plaster. Because the house is also visible from a distance, the saddle roof was fitted with a plain tile Elfino Agate Grey, giving the whole a coherent look.

## Maximum use of the plot

The positioning of the house makes optimal use of the narrower and sloping plot: for example, the side garden on the west side features a partly covered evening terrace, and the neighbouring houses stagger in building depth. This allowed the architect to turn the first-floor landing into a loggia with a view of the street length.







The classic form of this house is broken by the atypical receding end gables with playful window openings.

© Faded



# (JAHNKE-LEDANT Architects)

The combination of roof tiles in two colours gives the façade a natural look with a lot of nuance.

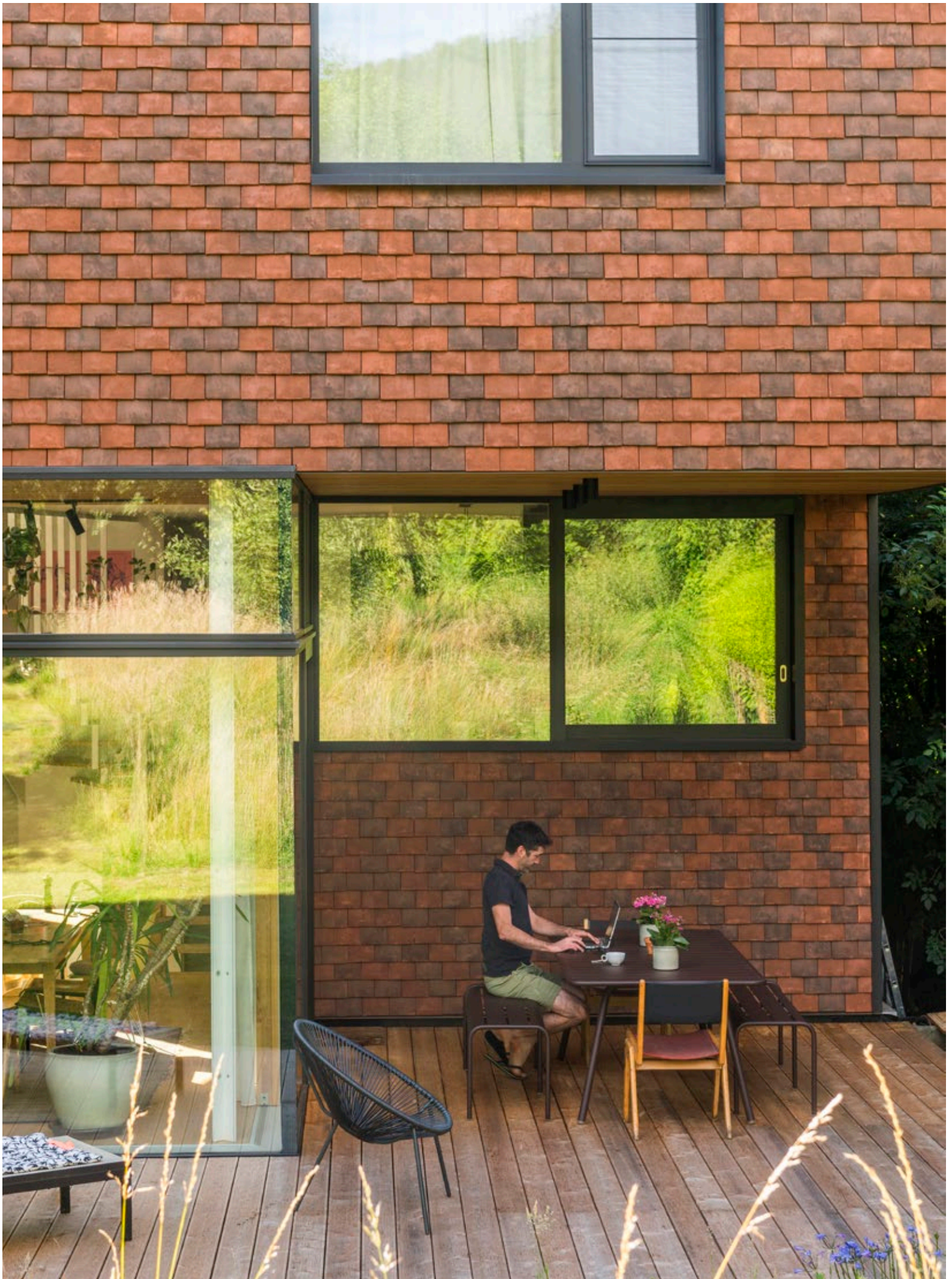
This house was built using as many eco-friendly building materials as possible. Only the foundation is concrete. The structure from the ground floor up is made of ceramic blocks with a wooden main frame. The larch windows are strategically placed, in function of maximum sunlight and optimal views of nature.

## **Subtly nuanced**

The architect also chose a natural material for the cladding, which also remains handmade and unchanged over time. Keymer Goxhill plain tiles, combined with wooden joinery, provide a natural look. The alternating distribution of Autumn brown and Dark chestnut roof tiles gives it a nuanced and interesting texture. The natural irregularities in the roof tiles also add character to the house.









(JAHNKE-LEDANT Architects)









(Jean-Philippe Coache architectes)



Subtle claustra elements let in filtered light and cooling air, giving the apparently closed façade a refined layering.



The volumetric design of this house is inspired by light, orientation and the urban context. This translates into an architecture that deliberately seeks contrasts and duality, characterised by a bold formal language and a dynamic play of light and shadow.

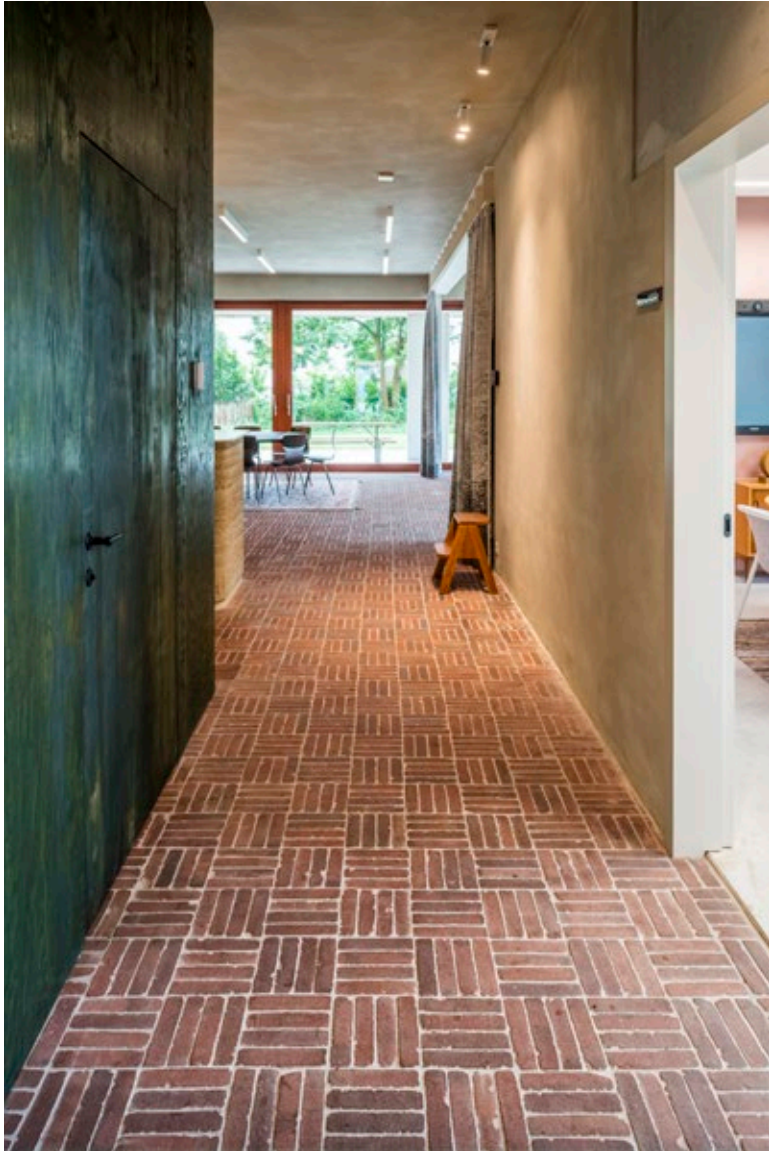
**Horizontality emphasised**

On the north side, the building manifests itself as a monolith, composed of stacked long and slender facing bricks that reinforce the horizontal lines. The Waterstruck Atica Red Eco-bricks connect tradition with modernity and refine the architectural expression. Their rough texture and wild bond create a dynamic façade appearance that constantly changes under the influence of light and shade. Subtle claustra elements let in filtered light and cooling air, adding a sophisticated layering to the seemingly closed façade. Moreover, the slimmer bricks contribute to a more sustainable use of materials by reducing raw material consumption.





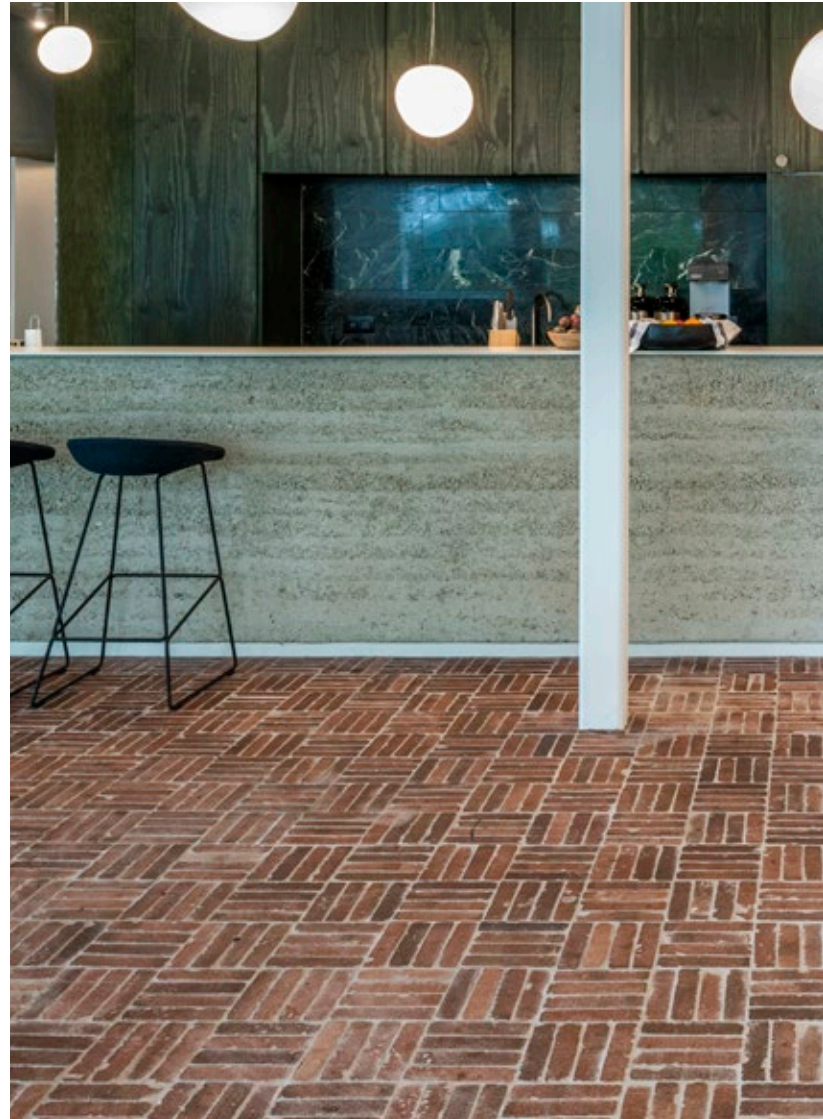
# (Sophie Van Noten Architect)



After forty years, construction company dhulst' moved to a new office with warehouse, which resolutely draws the card of sustainability. Central to the design are recycled materials, traditional techniques and authenticity. The eyecatcher in the refectory is a unique counter made of traditionally rammed loam, a residual product of used loam that can be dismantled and reused afterwards.

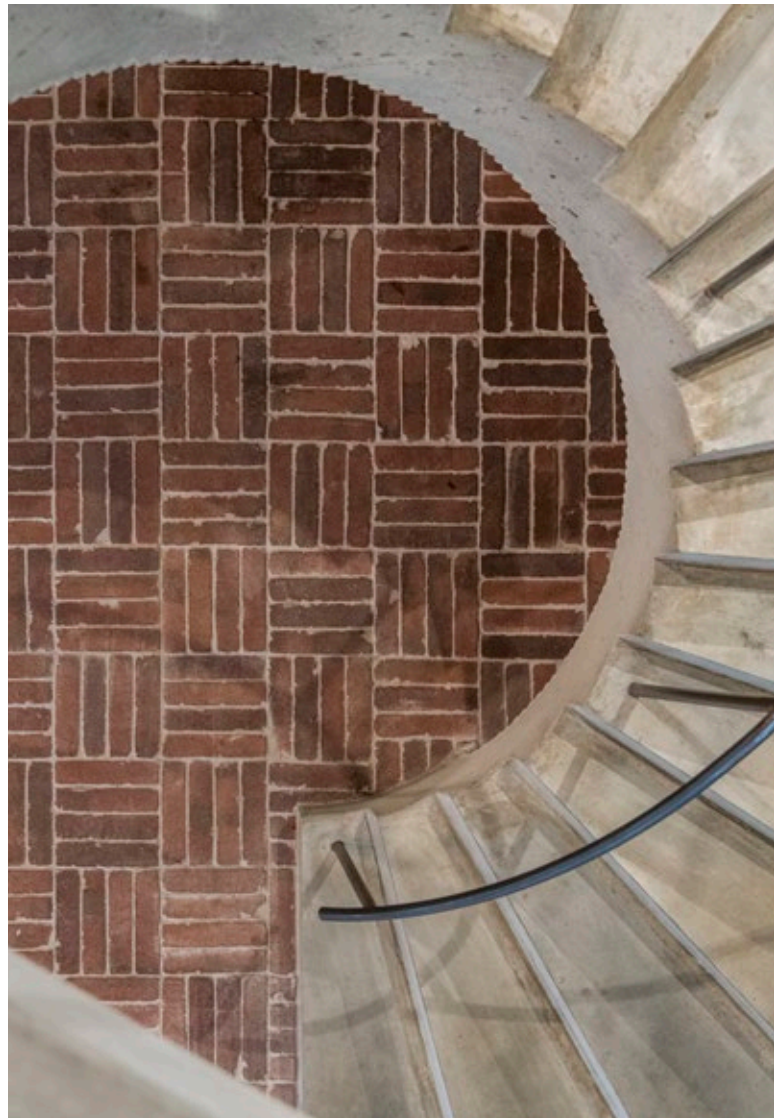
## **Rough texture, playful colours**

Subtle colour accents, such as the mud walls in old pink and the playful bright orange, yellow and pink tiles and washbasin in the accessible toilet, provide a strong contrast to the rough Rosa Waterstruck tumbled paver floor in dynamic block bonding.



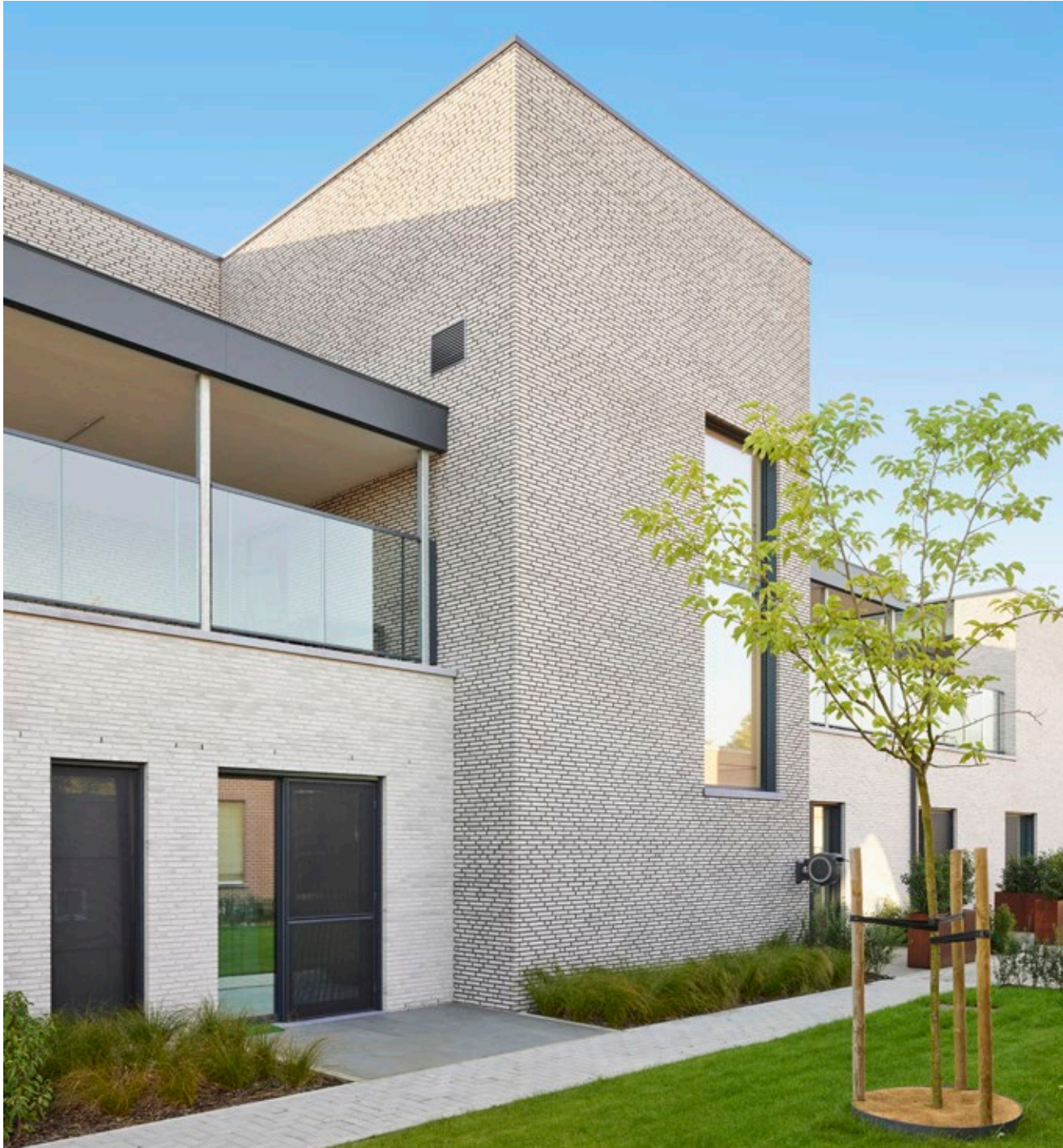


The showpiece in the entrance hall, an imposing spiral staircase, is further accentuated thanks to the rough paver floor.





(DETOO)



The anthracite details give it a fresh and modern look, while the undertone in the façade stone provides warmth.





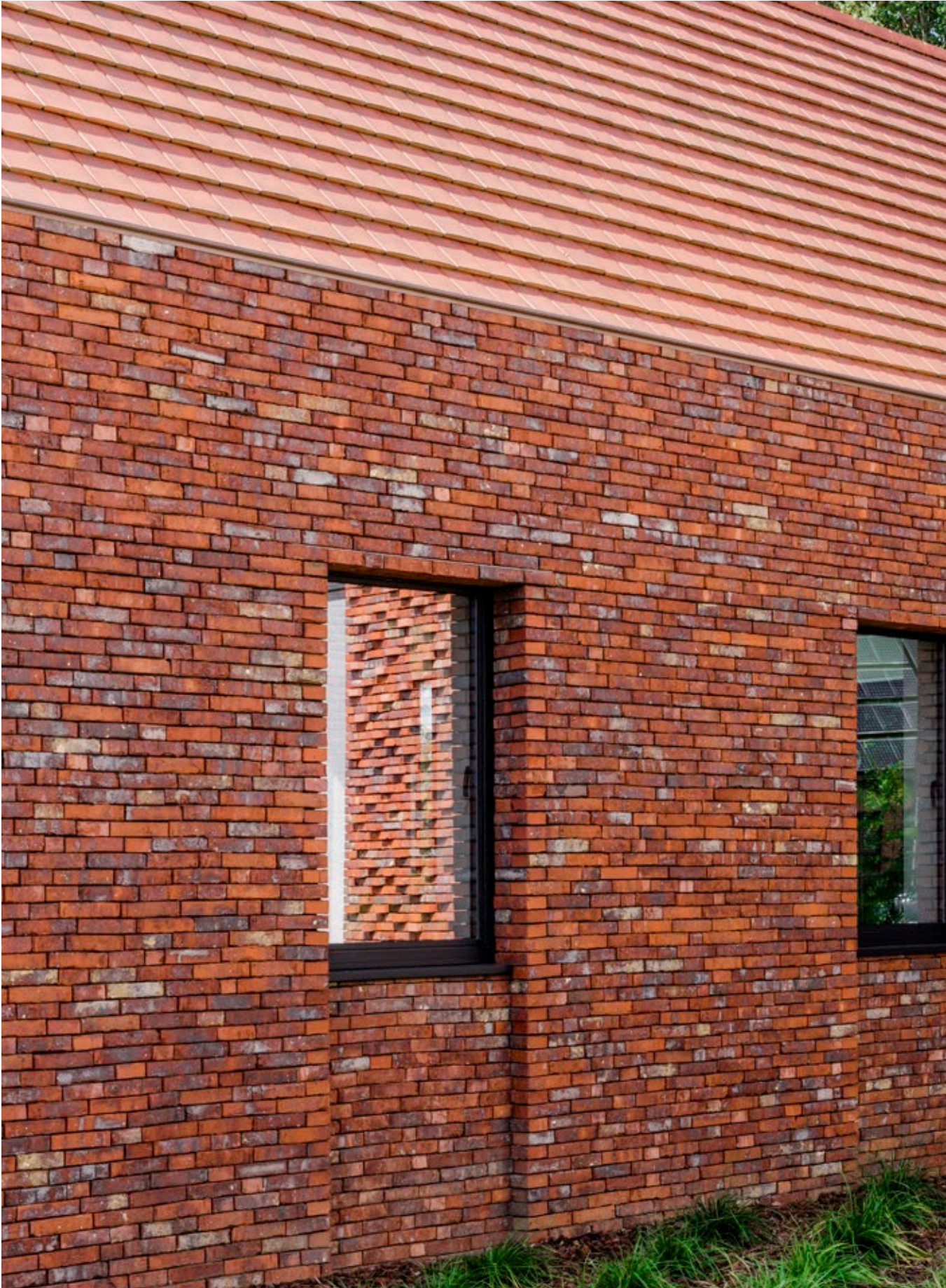
For De Triangel, a site for assisted living, three row houses gave way to a new building. To avoid a monolithic volume, the façade was given a varied design that refers to the original houses and the small-scale character of the care environment. By subtly pushing different volumes forwards and backwards, a playful and dynamic design is created.

**Diversity in jointing**

To avoid a multitude of materials, one façade finish was chosen: a light grey brick with a warm appearance. This choice gives the building a fresh and contemporary look. The combination of light grey and black joints creates a subtly fragmented façade appearance, while the dark grey joinery enhances the modern look. The result is a contemporary and fresh care environment.



(Architectuur by melanie)









# (Architectuur by melanie)



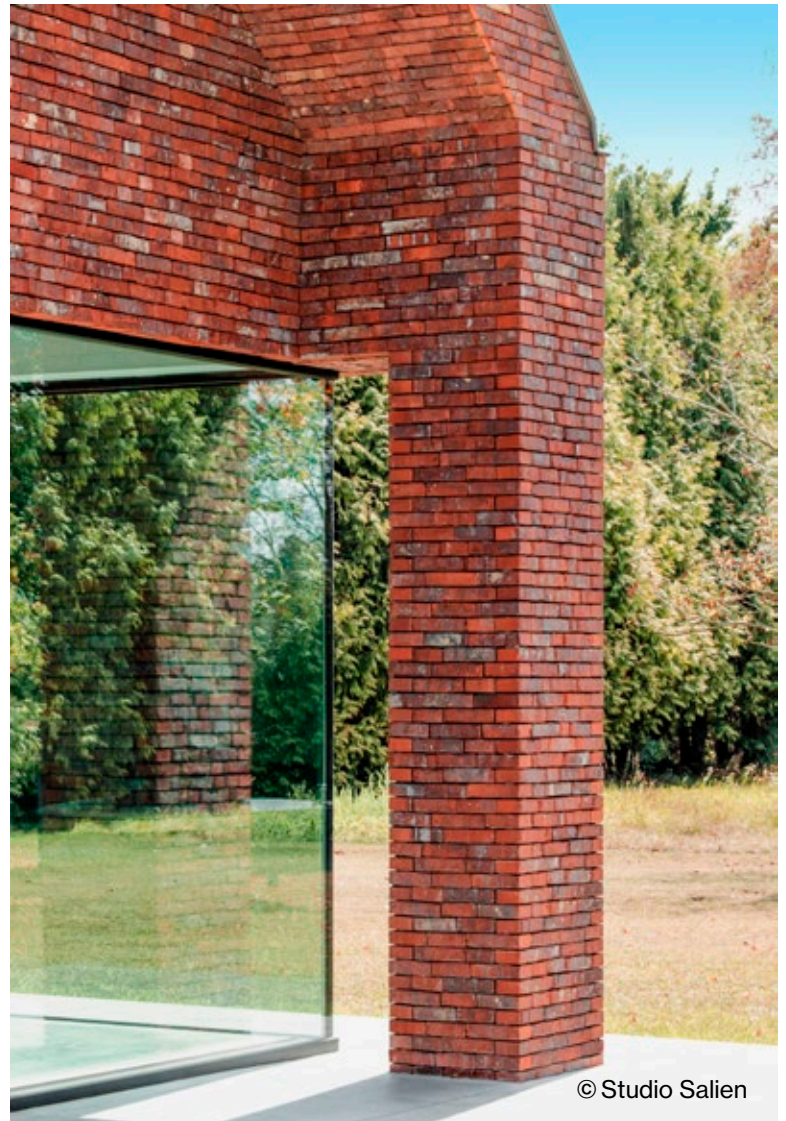
This former home with stables and workshops underwent a complete transformation into a modern gem in the Limburg countryside. The client's wishes were carried through to every aspect: general look and feel to the finest details.

## **Deep-set bricks**

Some of those details include the exposed rafters that bring warmth into the interior and numerous aesthetically finished functional solutions. The house surprises with quite a few intriguing façade details, such as deep-set bricks - a dynamic that contrasts nicely with the serene look of the floors and walls that continue inside and outside.



The deep-set façade and playful brickwork give the house a lively feel, balanced by the dark red brick.





(Stael Architect)



The brick and roof tiles reinforce classical architecture in its purest form.

This architect's home in Melle was thoroughly renovated and expanded while respecting the original structure. All superfluous elements, such as the bay window, an extension, a shed roof and façade ornaments, were removed with the essence of the house in mind.

**Purity in detail and material**

The architect paid close attention to detailing and materialisation. Eaves, sills and water drains were completely eliminated, ensuring a clean and uncomplicated result. The Arces Candy Red chipped facing bricks and the mix of Aléonard Esprit Patrimoine roof tiles in Vineyard Black, Lichen Green and Ochre Lichen reinforce the classic architecture in its purest form. The awning, in variable black stained wooden boards, serves as a sunshade on the south side of the house.



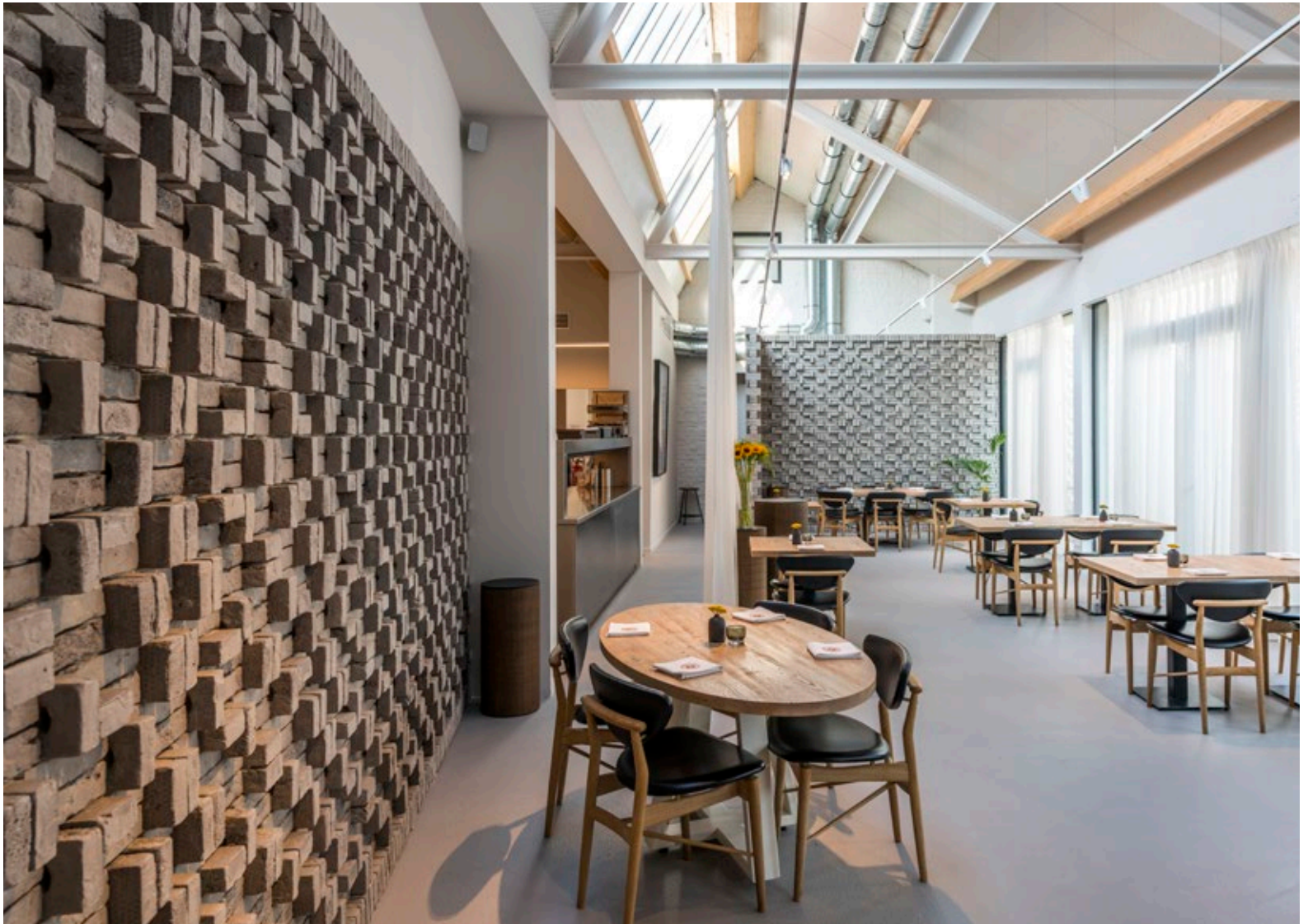
Façade Arces Candy Red chipped  
Roof Tile-mix Aléonard Esprit Patrimoine Vineyard Black,  
Lichen Green and Ochre Lichen





(Studio Bjorn Verlinde +  
COMPAGNIE COSTUME\_tailored architecture)

The agate grey facing brick refers to  
the colours of the North Sea and the Polders.



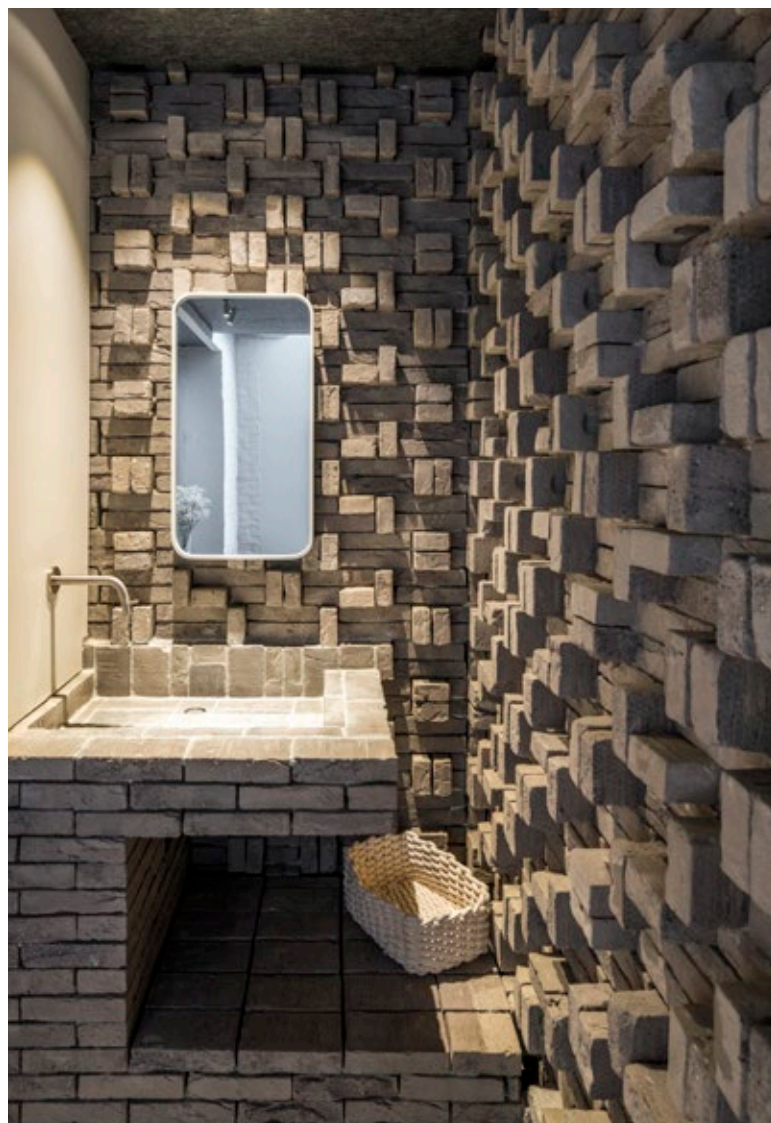
Design: Studio Bjorn Verlinde, Kortrijk & COMPAGNIE COSTUME\_tailored architecture, Brugge. Coordination: B&V Project, Poperinge



M Bistro is housed in a former warehouse that was completely gutted and then rebuilt. The original structure was retained and reinforced where necessary. Studio Bjorn Verlinde and Compagnie Costume completely opened up the restaurant, enveloped in a sober theme of shades of grey. In a balancing act between openness and intimacy, the kitchen was closed off with fine sheer curtains through which the chef and his cooks can only be seen as silhouettes.

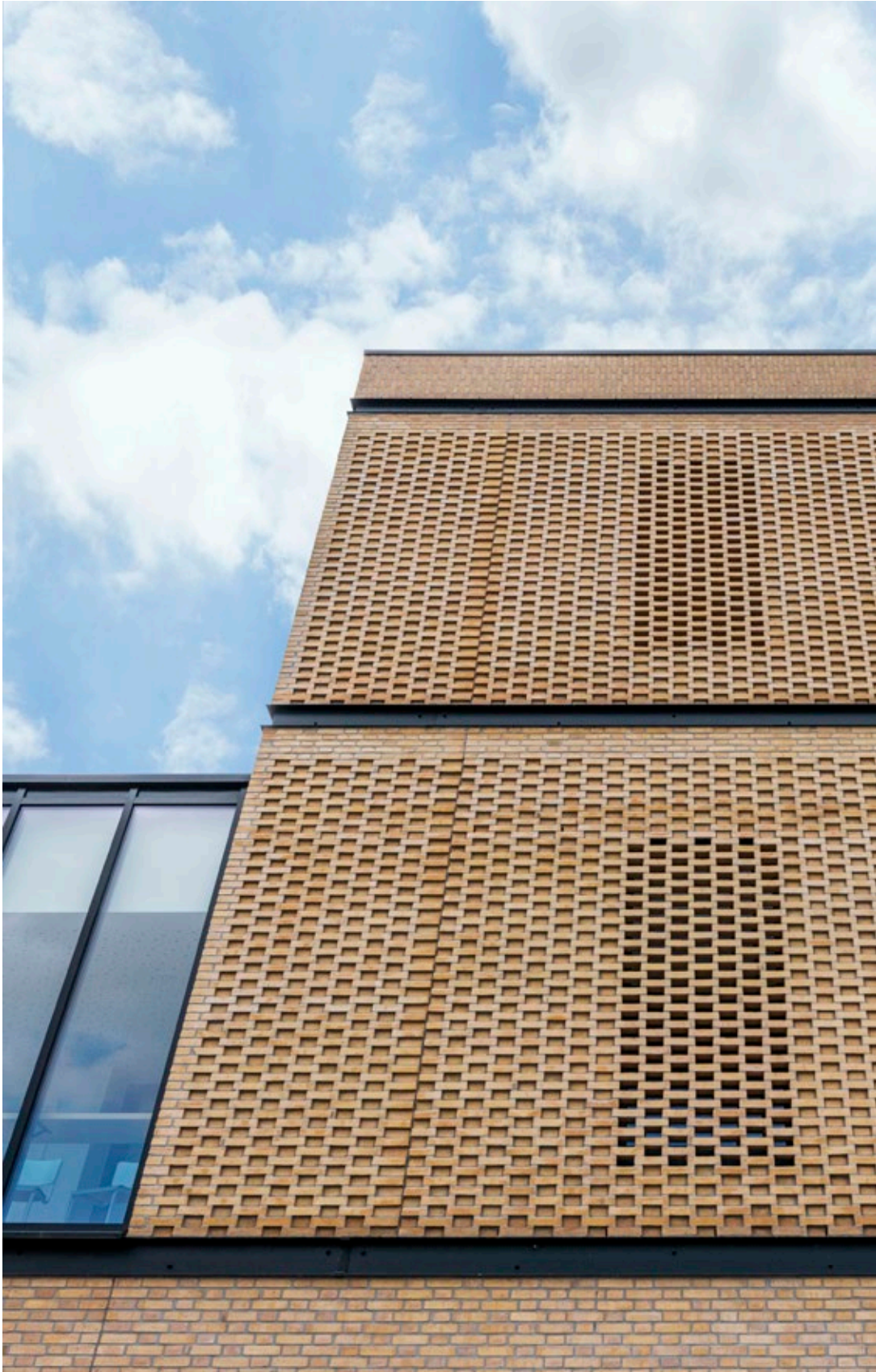
**Rhythmic brickwork**

Out of love of claustra and masonry bonds, the architects sought a brick with character. The result is an intriguing façade puzzle in Agora Agate Grey, whose colour refers to that of the North Sea and the Polders. With its solid rhythm, the grey masonry provides a pleasing but strong contrast to the soft lines of the curtains.



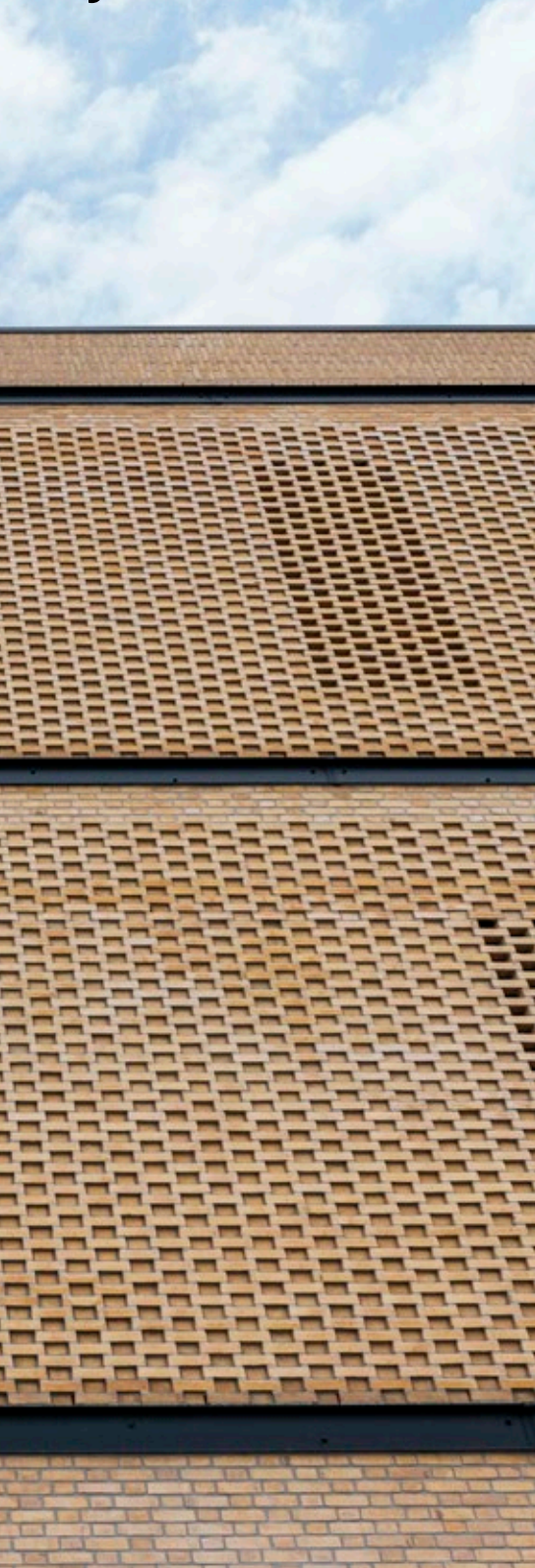


(Stad Gent, FM Onderwijs)





The façades play with different masonry dressings, complemented by claustra elements.



Freinet school Het Tandwiel was equipped to accommodate 240 pupils, following the principles of a community school. Thanks to its multifunctional concept, the building offers great added value for the local community.

**Strong architectural identity**

The historically valuable Gustaaf Callier building from 1935 has a strong architectural identity, with distinct interwar architecture. The left wing was completely renovated while retaining its original character, while the right wing gave way to a passive new contemporary-style building for security reasons. Both wings fit together thanks to similar volumetrics and materials.

The façades play with different masonry dressings, complemented by claustra elements. The horizontal lines break up the large volume and give a subtle nod to the existing building. Twenty nesting boxes have been built into the east façade for the swift.





# (EXTERIOR LANDSCAPING)

The laying method of the weathered clay pavers plays on the verticality of the black façade of the house.

The entrance area of this home exudes elegance and robustness thanks to the combination of carefully selected materials and sophisticated design. A solid block staircase and elegant borders with a central multi-trunked tree welcome the visitor and give it body and space.

## **Robust and elegant**

The warm earth tones and weathered look of the black-brown clay pavers perfectly complement the black cladding and do full justice to the surrounding greenery. The robust look of the Eros unsanded tumbled clay pavers strikes a nice balance with the serene laying pattern that subtly responds to the vertical lines in the cladding.









# (EXTERIOR LANDSCAPING)









(assar architects)

This 110-room residential care centre is part of a multifunctional and multigenerational complex in the historic setting of the former Notre Dame de Grace clinic. The landscape garden with footpaths and various recreational zones creates a green connection between the different functions. The building was shaped like a teardrop to make the best use of the available space and provide all corridors with natural daylight.

**A harmonious façade**

The façades are finished with a light nuanced facing brick, which blends nicely with both the zinc elements and the existing buildings in the street. The Forum Prata Nuanced was chosen to give the façade a lively relief, with a sustainable material that requires little maintenance.



The facing brick with its light hue not only gives the building a contemporary look, but also blends seamlessly with the zinc façade finishing.







(Erfgoed en Visie, formerly bow architecten)



In the centre of Roeselare, an abandoned industrial site was given a new purpose as a residential project with a playful and lively character. The master plan includes fifteen houses on a fairly compact triangular site. Despite the inefficient shape of the site, the houses were designed spaciously, distributed over three full-sized levels and each with its own outdoor space.

**Black and white in joinery and joint play**

The efficient playfulness of the master plan is translated into the volumetrics and play of rooflines, crowned by the brick architecture. One type of brick, the Elignia Nordica White, was chosen for the entire project, applied in an interplay of planes with two alternating joint colours. For each housing block, the planes form a frame, which was applied arrhythmically around black and white exterior joinery.



A playful interplay of white façade surfaces with two alternating joint colours







# (Piet Baily | Project architects)



Residence Parcado, with five spacious residential units, was designed with respect for the classic, rural character of the neighbourhood. Long horizontal lines and balustrades were to be avoided, and the building was to feature a gabled roof according to the architectural requirements of the municipality.

## **Classic look, modern technology**

The architect managed to fulfil the building's energy ambitions. The façades are built in Domus Casa Lena facing bricks, which emphasise the classic rural character of the building and contrast nicely with the anthracite of the roof, bay windows and black joinery.







Implementation: G-label

The classic white facing bricks have a sleek finish with anthracite elements, such as the roof tiles, bay windows and subtly integrated solar panels in the roof.



(ampe.trybou architecten)





For this primary school in Oudenburg, ampe.trybou architecten collaborated with the teachers and school management to explore an innovative approach to school operations. The design incorporates the site's elevation differences into organic play features, such as a green embankment, several slides, a sandpit, and an open-air auditorium.

**Playful brickwork**

The façade of the school is characterised by an intriguing brick architecture that gives the building a pleasing and legible proportion. Different masonry bonds, unique detailing around the windows and the insertion of a plinth are complemented by intermediate mouldings and a cornice. The coloured architectural concrete at the level of the covered kindergarten playground gives the whole a recognisable face.

The playful brickwork and coloured concrete, combined with refined detailing, give the building a characteristic individuality.





(ampe.trybou architecten)









(Daniel Ost Group + Ecoworks)

The colour and robust look of the clay pavers are completely in harmony with the abundant greenery.



The Wings is an award-winning building with more than 50,000m<sup>2</sup> of office space, hotel, fitness, restaurants and coworking facilities. The landscape design, conceived by Daniel Ost Group, creates a complementary relationship between the building and the outdoor space. Ecological, sustainable and innovative materials were integrated into the green spaces, paving and technical installations.

#### **Multifunctional green elements**

The outdoor space is designed for versatile use, with terraces and gardens aimed at relaxation, meetings and social interaction. An eco-scan of the design determined the need for a 70% green ratio and the use of native flora.

An organic water feature with water lilies enhances the architectural lines of the building; a centrally placed canopy with a solitary tree acts as a natural reception. Furthermore, the design surprises with a green art installation inspired by The Wings' logo, strategically placed evergreen flora for a permanent green appearance and two wadis for water retention and biodiversity. The whole was finished with Eros unsanded tumbled clay pavers, completely in harmony with the abundant greenery in terms of colour and robust look.

Implementation: Ghelamco







(PARVIS)





The combination of grey brick and wooden cladding gives the façades a character that is both timeless and warm.

A pronounced desire in this renovation project was to match the existing outlines while making the most of the corner plot to create a contemporary volume.

**Grey and wood in harmony**

Imperium Flavius Grey was chosen for its durability and weather resistance, which is essential for a home close to the street in an urban area. The grey shade provides a timeless aesthetic, allowing the building to blend into its surroundings while maintaining a contemporary identity. The wooden cladding adds a touch of lightness and warmth, the contrast between tradition and innovation accentuated in a balanced harmony.

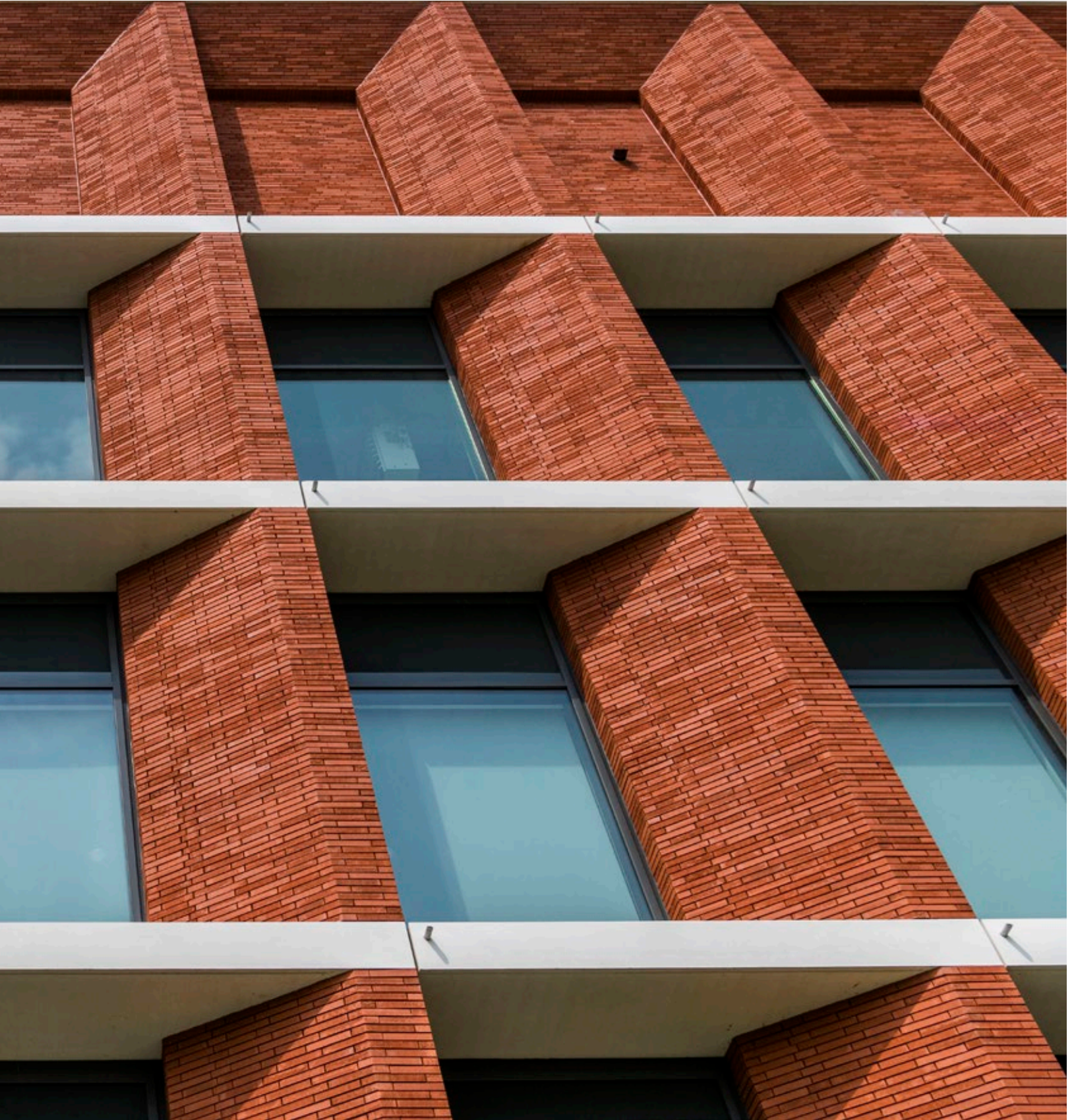




(assar architects + SVR-ARCHITECTS)









(assar architects + SVR-ARCHITECTS)



Design: assar architects + SVR-ARCHITECTS. Implementation: Alinso Group i.c.w. PMV and TLG Science Park



The individuality of the different buildings is emphasised by the play of shadow and rhythm.

Eiland Zwijnaarde is being developed into a green, sustainable business park, with a lot of attention given to the visual quality of the architecture. With research and production facilities Legend Biotech and J&J Innovative Medicine, a powerful response is being formulated. The pronounced brick architecture gives expression to the different building volumes. The use of the same facing brick and the vertical articulation create a coherent whole, and depending on the viewpoint, the character of the building evolves.

**Verticality as a common thread**

The central volume with continuous white architectural concrete bands has a strong representative and open character towards its surroundings. The vertical façade ribs of the closed storage building make the very present street frontage interesting.

The technical installations are shielded by a combination of facing brick and horizontal slats; shielded but also present in the street scene. In the inner street, the façade is reminiscent of old industrial brick architecture.





(a[RT])

The choice of roof tile was made from the point of view of sustainability and the cradle-to-cradle principle.

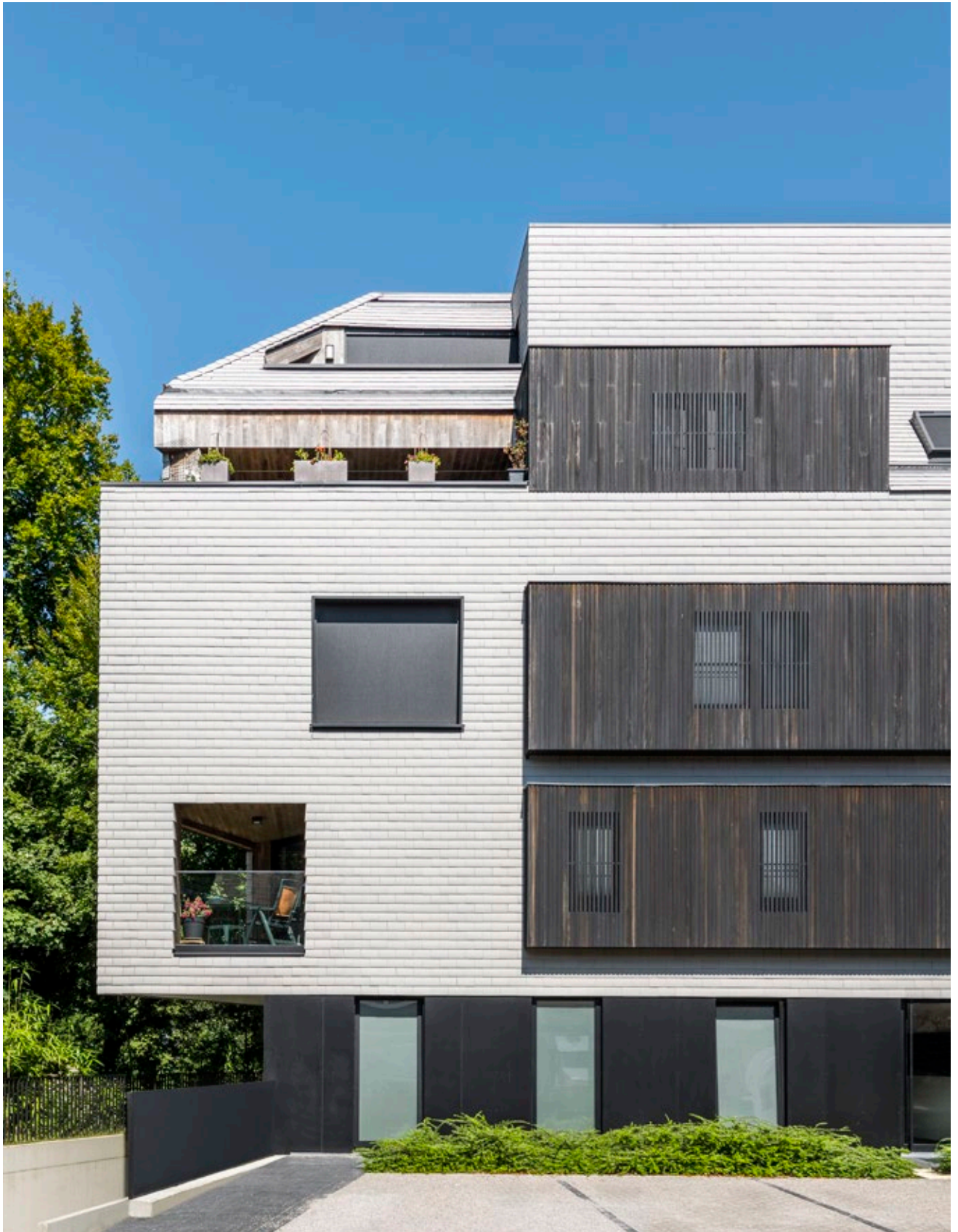


Architectural firm Rogiest+Team chose to render this building in one skin: both the roofs and façades were clad in plain tile Elfino Agate Grey. Black accents were applied with Volkern panels, aluminium external joinery and stained, vertically positioned wooden cladding.

**Volume play with contrast**

The cladding zones are developed as projecting boxes that create a striking contrast in combination with the light grey main volume, a nice interplay with the indoor terraces. The black Volkern panels create a plinth effect, making the main volume appear to float on a plinth.







(HAMBLOK - PISSENS architecten)

The Aquata red with fine edging in Corten steel perfectly complements the façades - a uniform atmosphere that contrasts sharply with the wildflower beds.

The brick architecture of the house was constructed with great attention to detail. A fine zinc bead placed as eaves above the flat roof of the ground floor extends into the façades, forming a visual subdivision between ground floor and second floor.

The front façade looks solid and closed; an effect reinforced by the complete omission of window openings. Through the perforated brickwork, light and views of the street are admitted from the night hall on the second floor. This does not negate the closed effect.

**Playful mixture of shades of red**

The brick-mix of Andalusia, Asturia, Catalunya and Navarra forms a perfect mix of warm tones, giving a playful character to the solid volume of this house.









# (Arch StryTect)



The challenge for this two-dwelling house was to create a specific identity for both owners, while still making the whole look like one big urban villa. The programmes and ideas on living quality of both building owners were fused into a unity in architecture, materials and colours.

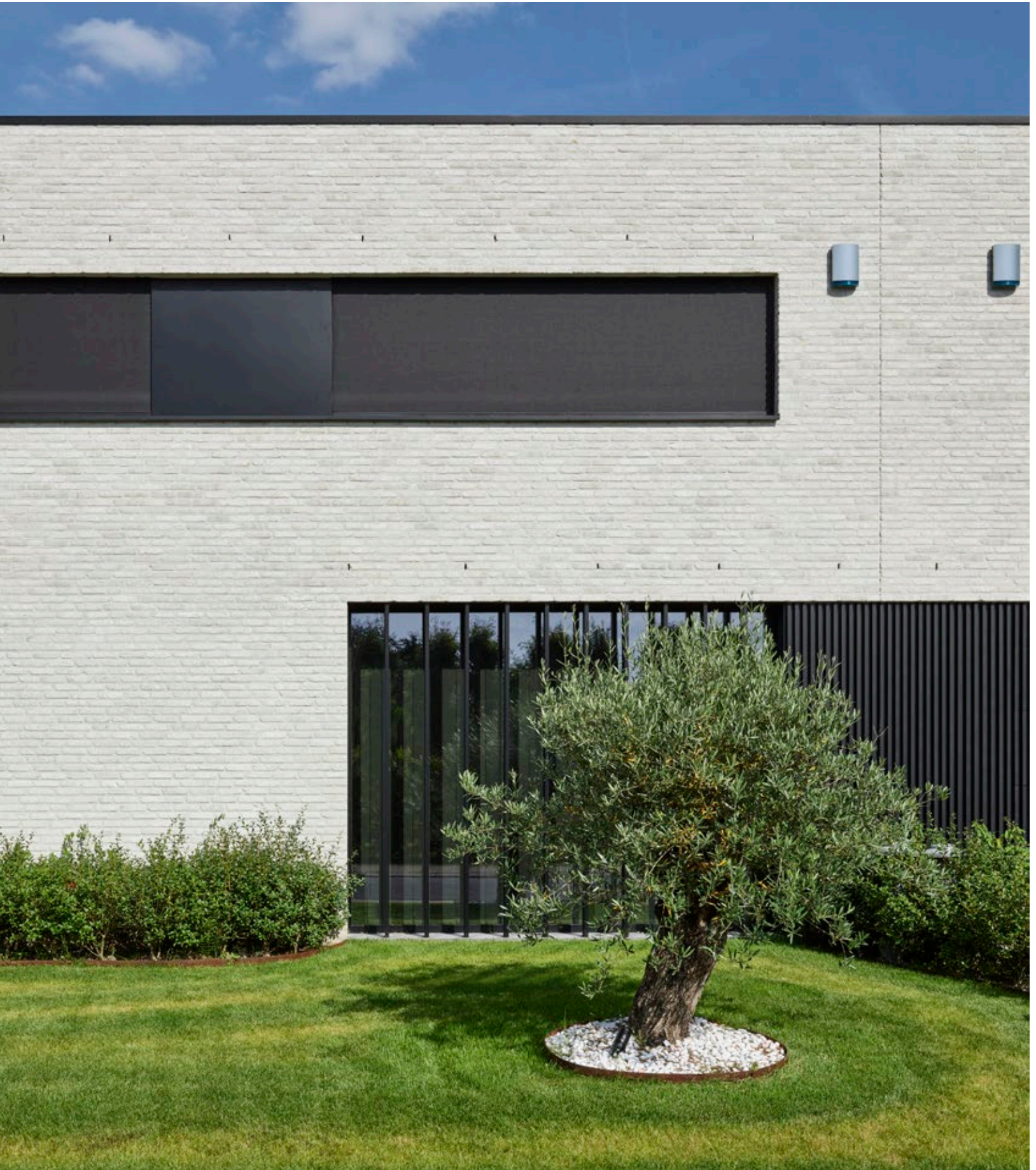
#### **Neutrality in ton sur ton**

With the Domus Casa Lena, a deliberate choice was made for a low-maintenance facing brick, which nevertheless makes a contemporary and serene impression. The calm, neutral light facing brick was classically jointed for a tone-on-tone effect.

The architect combined the wishes of two building owners into one coherent whole, which, thanks to its serene materiality, exudes tranquillity.











Wienerberger nv  
International Export Division  
Kapel ter Bede 121, B-8500 Kortrijk  
**T** +32 (0)56 24 95 83  
**E** [export@wienerberger.be](mailto:export@wienerberger.be), [wienerberger-world.com](http://wienerberger-world.com)

The photos in this brochure are indicative and may deviate from the actual material. The information in this brochure is not binding and may be changed by wienerberger at any time. 03/2025

